



DC200 with standard mounting angles



DC200 with optional above floor protective mounting frame



FOR PLANT AND COMMERCIAL RECOVERY

Ramsey's heaviest DC series electric winches have been designed to take on the very toughest recovery and plant loading work. With a reputation for giving long life and complete reliability, everything about these rugged machines is of the highest quality - from phosphor bronze wheels and needle roller bearings in the gear box, to the heavy duty roller guides. The long drum model (DC200) will hold up to 40m x 10mm wire rope, enabling a snatch block to be used, even on semi-trailer applications.

DC200 KIT COMPRISES

Electric Winch, 4.5m heavy duty 2-button wanderlead control, mounting angles, industrial guide rollers with greaseways, galvanised wire rope with safety latch hook (maximum capacity 40m x 10mm dia). Individual kit components can be supplied as required.

Total kit weight 70kg.

OPTIONAL EXTRAS

Load limiting switch providing automatic cut-out when the safe working load is exceeded



Electric isolator switch

Snatch Block

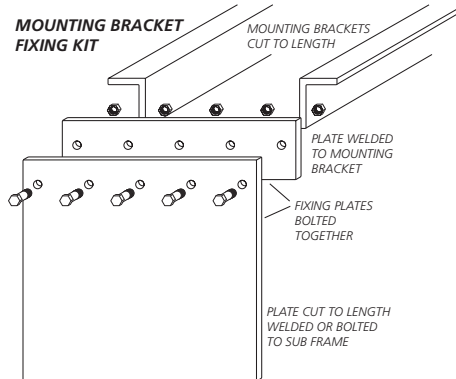
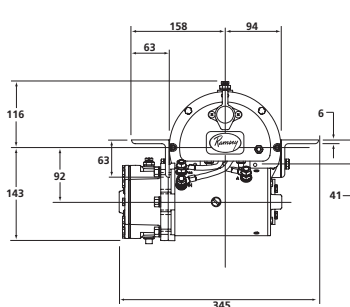
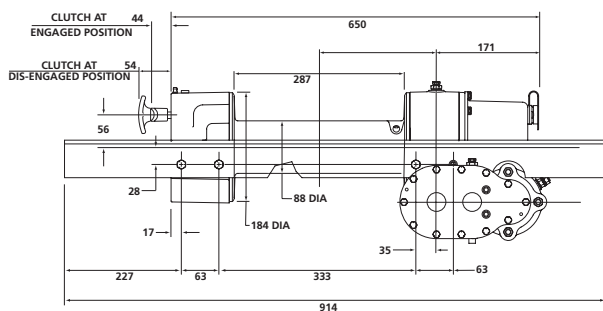
Auxiliary industrial 16 amp kit for wanderlead connection

Radio Control Unit

RAMSEY DC200/DCY200 Electric Winch

FEATURES INCLUDE

- **3.6 tonne line pull**
Stall rating approximately 6 tonne (BS7901 and DIN 15020 rating 32kN)
- **Worm and wheel drive**
Holds load safely without relying on a separate internal brake
- **RAM-LOK freespool clutch mechanism**
Spring loaded for positive engagement
- **Heavy duty series wound motor**
12v and 24v models available
- **Power in/power out**
Fine control ensures load will not overrun
- **Low mount feature**
Design allows for low level floor mounting, therefore less vulnerable to damage from equipment being loaded
- **Heavy duty wanderlead control**
Industrial quality two-button control switch for heavy duty work
- **Low amperage draw**
Practical and obtainable at rated line pull
- **12 months warranty**
On parts and service (excluding wire rope)
- **Fitting service**
Full or partial fitting can be provided, including load testing and certification
- **After sales service**
Technical advice given on winch fitting and component replacement, plus efficient overnight parts despatch and fast repairs. Factory winch installation available



LAYER

		1	2	3	4
* Maximum Rated Line Pull by Layer	kgf	3600	2970	2510	2200
DC200 Rope Capacity Cumulative by Layer (10mm Dia. Wire Rope)	m	8	18	29	42
DCY200 Rope Capacity Cumulative by Layer (10mm Dia. Wire Rope)	m	4.5	10	17	24

PERFORMANCE FIRST LAYER OF CABLE

LINE PULL kgf	LINE SPEED (approx)		Amp Draw (approx)	
	12v m/min	24v m/min	12v	24v
0	4.3	4.5	65	33
500	3.0	3.8	90	48
1000	1.8	3.5	120	64
2000	1.4	2.6	175	94
3000	1.2	1.8	230	120
3600	1.1	1.4	280	140

All figures are based on battery maintaining normal voltage.

SPECIFICATIONS

Design rating on first layer 3630kgf (BS9701 and DIN 15020 rating 32kN)

Stall Rating 6000kgf approximately

Gear Reduction: 470:1

Braking: HID self locking worm & wheel holds load until winch is powered out.

Construction: Aluminium die-cast end housings with steel drum, worm high carbon steel with phosphor bronze wheel designed for years of trouble free service.

Lubrication: Worm and wheel and spur gears all run in oil baths

Motor: 1.9 HP (12v) 2.5HP (24v) DC

Wire Rope: 10mm diameter wire cored with latch hook. Minimum breaking strain 6420kg. 10mm diameter

Wanderlead Control: Tough press button hand control with 4.5m lead. Other lengths available on request.

Roller Guides: Heavy duty commercial type with greaseways.

Weight: Complete Kit: DC200: 70kg DCY200: 68kg

WARNING

These winches must not be used for the movement of personnel and 5 wraps of wire rope must be maintained on the drum.

WARRANTY

Each new winch is guaranteed against defects in workmanship and material defects for a period of twelve months from date of purchase.

WIRE ROPES ARE NOT INCLUDED UNDER WARRANTY.

Bushey Hall Winchmaster sales@bhwwgroup.com www.bhwwgroup.com

Southern Office: Lismirrane Industrial Park, Elstree Road, Elstree, Herts, WD6 3EE Tel: +44 (0)20 8953 6050 Fax: +44 (0)20 8207 5308

Northern Office: 6 South Orbital Trading Park, Hedon Road, Hull, East Yorkshire, HU9 1NJ Tel: +44 (0)1482 223 663 Fax: +44 (0)1482 218 285

Bushey Hall Winchmaster is a division of BHW Group Limited. Registered in England No. 1342461. VAT No. 301 7915 80

