



## LARGE DRUM CAPACITIES

### DOW-LOK Clutch

Ramsey's unique DOW-LOK Clutch is incorporated as standard on this model providing the user with easy engagement and disengagement of the freespool clutch.

Additionally the clutch mechanism is driven positively into the fully engaged position as the winch is powered, thus ensuring full safe clutch engagement.

### ADDITIONAL EQUIPMENT & SERVICES

- Electric / pneumatic control valve with manual lever and including 7m wanderlead control, heavy duty 16 amp socket, electrical control system with all wiring in Armaflex protection also includes dump valve with emergency stop button ensuring compliance with EU machinery directive.
- Wire Rope – up to 60m x 16mm dia. (1960N/mm<sup>2</sup> grade) fully galvanised flexible, crush resistant with heavy duty safety hook.
- Hydraulic oil reservoir tank with filter sight gauge and filler cap.
- Radio control unit to give flexibility in operating the winch up to 40m distance.
- PTO and pump.
- Diesel or petrol donkey engine power packs.
- Snatch blocks.
- Full or partial fitting can be provided, including load testing and certification.

## RAMSEY H-89 Extra Heavy Duty 9 Tonne Hydraulic Winch with DOW-LOK Clutch

### Heavy Recovery or Plant Moving Rigid Vehicles, Semi-Trailers

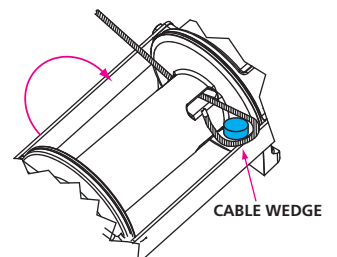
*Designed for use on Heavy Recovery Vehicles, 6 & 8 Wheel Rigid Plant Vehicles and Semi Trailers.*

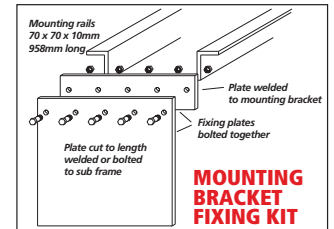
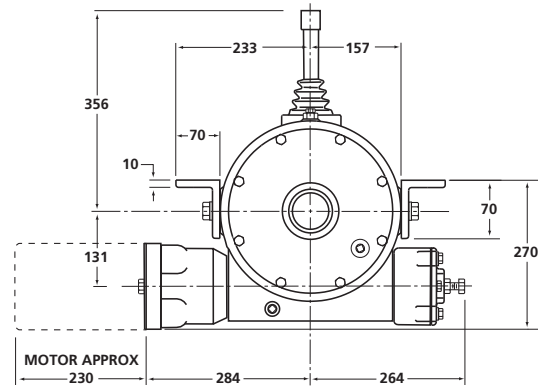
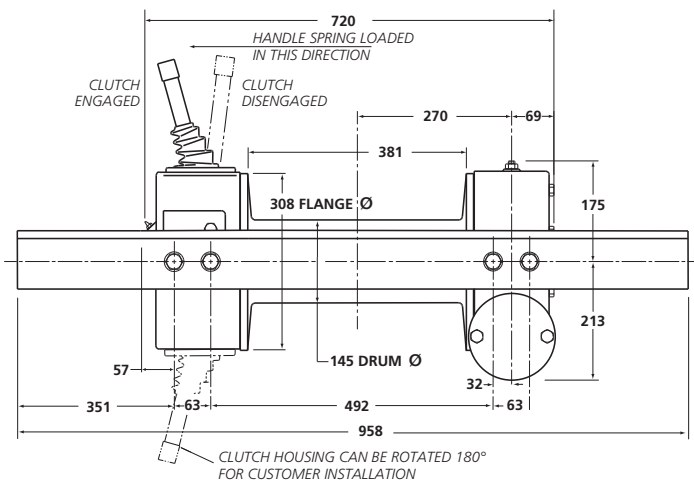
*The Ramsey H-89 has been specifically designed for heavy commercial recovery vehicles such as underlifts and plant moving vehicles loading in excess of 10 tonne rolling loads. It provides the fine control necessary for commercial recovery or winching on to plant vehicles heavy and / or large items of plant. The gearing and castings are tough enabling the shock loading associated with this type of work to be taken without causing damage.*

### FEATURES INCLUDE

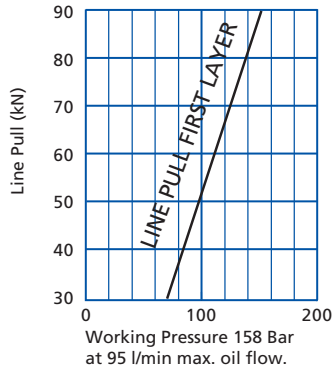
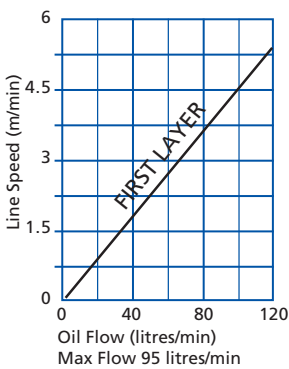
- **9078kgf line pull**  
Rated line pull of 89kN
- **EN14492-1 compliant**
- **Heavy duty worm drive**  
Built to take shock loading
- **Hydraulic motor and mounting angles**  
Supplied with the winch
- **Wedge pocket rope anchor on drum**  
Major safety benefit - prevents rope release from drum fixing
- **Excellent rope storage**  
Up to a maximum 60m x 16mm (1960N/mm<sup>2</sup> grade) wire rope, 6 x 36 wire core construction
- **Fairlead roller guides**  
Heavy duty with greaseways
- **After sales service**  
Technical advice given on winch fitting and component replacement, plus efficient overnight parts despatch and fast repairs. Factory winch installation available

### SECURE WIRE ROPE ANCHORAGE





## HYDRAULIC PERFORMANCE



## H-89 Line speed examples

|                                                               |           | LAYER      |            |            |
|---------------------------------------------------------------|-----------|------------|------------|------------|
|                                                               |           | 1          | 2          | 3          |
| Maximum Rated Line Pull by Layer                              | kN<br>kgf | 89<br>9078 | 74<br>7548 | 63<br>6426 |
| H-800 Rope Capacity Cumulative by Layer (16mm Dia. Wire Rope) | m         | 10         | 23         | 38         |
| *Line Speed at 95 l/min                                       | m/min     | 4          | 5          | 6          |

\* Based on recommended 16mm wire rope, 1960N/mm<sup>2</sup> grade and 244cc / rev. motor.

## INSTALLATION

The winch is supplied complete with the mounting angles as illustrated. These must be cut to length to suit the installation and the ends bridged with 10mm steel plates. These plates are then bolted through the securing framework on the vehicle. This method of installation ensures the winch can be removed for maintenance purposes if required. A fitting kit including the end plates and longitudinal chassis mounting plates are available as an optional extra see diagram above right.

## SPECIFICATIONS ON H-89

|                         |                                                                                                                                                                |
|-------------------------|----------------------------------------------------------------------------------------------------------------------------------------------------------------|
| Rated Line Pull:        | 89kN (9078kgf). EN 14492-1 compliant                                                                                                                           |
| Hydraulic Requirements: | Operating pressure approximately 158 bar Maximum oil flow 95 lt/min                                                                                            |
| Line Speed:             | 4m/min on first layer, at 95 l/min for optimum oil flow                                                                                                        |
| Wire rope:              | 16mm diameter. Maximum length = 60m.<br>(1960N/mm <sup>2</sup> grade. 6 x 36 wire core construction recommended)                                               |
| Weight:                 | 185kg                                                                                                                                                          |
| Gear Reduction:         | 40:1                                                                                                                                                           |
| Winch Construction:     | Aluminium cast housings with steel drum                                                                                                                        |
| Drum:                   | 145mm dia. x 381mm length with wedge pocket rope anchor. Flange diameter 308mm                                                                                 |
| Braking:                | Worm and Wheel gear reduction with additional Worm Brake<br>(Reversible for clockwise or anti-clockwise drum rotation)                                         |
| Freespooling:           | Incorporates unique Dow-Lok clutch. Provides easy engagement and disengagement for the user and drives to full engagement when winch is powered in under load. |

## NOTES

These winches must not be used for the movement of personnel and 5 wraps of wire rope must be maintained on the drum.

Data shown is approximate and intended as a guide only.

## WARRANTY

Each new winch is guaranteed against defects in workmanship and material defects for a period of twelve months from date of purchase.

Wire ropes are not included under warranty.

**Bushey Hall Winchmaster** sales@bhwwgroup.co.uk www.bhwwgroup.com

**Southern Office:** Lismirrane Industrial Park, Elstree Road, Elstree, Herts, WD6 3EE Tel: +44 (0)20 8953 6050 Fax: +44 (0)20 8207 5308

**Northern Office:** 6 South Orbital Trading Park, Hedon Road, Hull, East Yorkshire, HU9 1NJ Tel: +44 (0)1482 223 663 Fax: +44 (0)1482 218 285

Bushey Hall Winchmaster is a division of BHW Group Limited. Registered in England No. 1342461



CERT. No. 1769