



## CWG LIFTING WINCHES

300kg

**CWG10077 (300kg)**

**CWG30075 (300kg)**

110V or 240V x 1ph, or 415V x 3ph AC

### FEATURES INCLUDE

- **Single or 3 phase options**  
CWG10077 = 110V or 240V x 1ph  
CWG30075 = 415V x 3ph (Includes low voltage control)
- **Electromagnetic, spring applied, failsafe brake**  
Provides instant, safe braking
- **Bi-rotational**  
CWG winches can be installed with wire rope coming off the top or bottom of the drum
- **Enclosed drum flange**  
Prevents rope becoming trapped between drum and support casing
- **Complete with wire rope**  
Galvanised for longer life
- **Compact design**  
For easy installation
- **360° weighted safety hook**  
Swivel type with safety catch
- **2 metre power lead**  
Pre-wired to the winch with commercial type plug
- **Motor to IP44 as standard**  
Brush type motor, no options

### OPTIONAL EXTRAS

- **Low voltage control (Supplied as standard on 3ph)**
- **Radio remote control - via low voltage control**
- **Weather proof enclosure**

### WINCH STANDARDS & BHW GROUP LTD

The British Standard: BS EN14492-1 for power driven winches, BS EN14492-2 for power driven hoists provides the means for conformity to essential Health and Safety requirements of the EN Machinery Directive and the essential Health & Safety at Work Act 1974.

Conformity to these standards is the joint responsibility of the supplier, the installer and the company operating the product.



BHW Group Ltd products are fully compliant and carry a CE and UKCA mark. A Declaration of Conformity is also supplied with each winch or hoist.

Our aim at BHW Group Ltd is to ensure the correct machine is supplied to suit the application and we welcome the opportunity of discussing the proposed application and offer advice. It will help us considerably if information regarding the maximum and average loads to be lifted or pulled - and approximate frequency of use can be provided.

**For hoisting applications,** the minimum breaking force (MBF\*\*) of the wire rope must be 5 x the lifting capacity of the hoist. The ratio of wire rope diameter to mean drum diameter\* is usually at least 15:1. This will vary according to the application, the average operating time per day and the average and maximum weights being lifted.

**For pulling applications,** as a general rule, winches used in pulling applications rarely see their maximum rated capacity and are used intermittently for short running periods. In these applications the wire rope MBF\*\* to winch rating can be a minimum 2:1 and the ratio of wire rope to mean drum ratio\* as low as 10:1.

In applications where the winch is used for longer running times and more frequently sees higher loading conditions the wire rope to MBF\*\* should be 3:1 and the ratio of wire rope to mean drum ratio\* 12:1.

**For recovery vehicles** the permissible standard of wire rope MBF\*\* to winch rating can be a minimum 2:1 and the ratio of wire rope to mean drum ratio\* only 10:1. This minimum standard is permitted because the running time is so short and the winch rarely sees maximum load.

**Wire rope capacities** the maximum amount of wire rope on the drum must leave a freeboard to the top of the drum flange of 1.5x wire rope diameters to prevent the wire rope coming off the drum.

**Winches and hoists with capacities over 1000kg** must be load limited.

\* Mean drum diameter = the drum diameter plus the diameter of the wire rope.

\*\* MBF = the Minimum Breaking Force of the wire rope.

**Bushey Hall Winchmaster** sales@bhwgroup.com www.bhwgroup.com

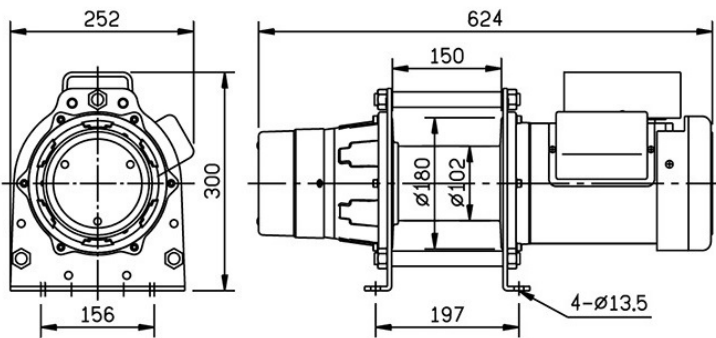
**Southern Office:** Lismirrane Industrial Park, Elstree Road, Elstree, Herts, WD6 3EE Tel: +44 (0)20 8953 6050

**Northern Office:** 6 South Orbital Trading Park, Hedon Road, Hull, East Yorkshire, HU9 1NJ Tel: +44 (0)1482 223 663

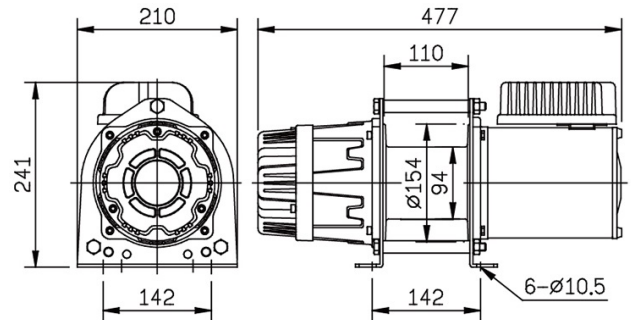
Bushey Hall Winchmaster is a division of BHW Group Limited. Registered in England No. 1342461 VAT No. 301 7915 80



## CWG10077



## CWG30075



## SPECIFICATIONS

### CWG10077

### CWG30075

Voltage options:	110V, 1ph	240V, 1ph	415V, 3ph
Lifting: Capacity	300kg	300kg	300kg
Height of lift	43m		29m
Weight: Winch only	42kg		32kg
Total kit average	44kg		34kg
Line speed: 1st layer	12m/min		10m/min
Last layer	18m/min		15m/min
Duty cycle:	1ph have a duty cycle of 25%, with a max. of 60 starts per hour		
Wire rope: ø x length	6mm x 45m		5mm x 30m
Safety factor	Minimum factor of safety 5:1		
Motor type:	Induction motor		
Outputs: Kilowatts	1.5kW	1.5kW	0.75kW
Amperes	20A	10.6A	1.8A
Braking:	Electromagnetic spring applied failsafe		
Drum: Length	150mm		110mm
Diameter	102mm		94mm
ø Flange	180mm		154mm
Rope ø to mean drum ø ratio:	18:1		20:1

\* Mean drum diameter = the drum diameter plus the diameter of the wire rope

## NOTES

These winches must not be used for the movement of personnel and 7 wraps of wire rope must be maintained on the drum.

Data shown is approximate and intended as a guide only.

## WARRANTY

Each new winch is guaranteed against defects in workmanship and material defects for a period of twelve months from date of purchase.

Wire ropes are not included under warranty.

**Bushey Hall Winchmaster** sales@bhwgroup.com www.bhwgroup.com

**Southern Office:** Lismirrane Industrial Park, Elstree Road, Elstree, Herts, WD6 3EE Tel: +44 (0)20 8953 6050

**Northern Office:** 6 South Orbital Trading Park, Hedon Road, Hull, East Yorkshire, HU9 1NJ Tel: +44 (0)1482 223 663

Bushey Hall Winchmaster is a division of BHW Group Limited. Registered in England No. 1342461 VAT No. 301 7915 80

