



BHW

Bushey Hall Winchmaster

www.bhwgroup.com



T-MAX EW9500

12v or 24v DC Electric Recovery Winch 2250kg Line Pull

Conforming to EN14492-1 Cranes – Power Driven Winches & Hoists – Part 1: Power Driven Winches

TYPICAL USES

For Light Duty Car Transporters, Plant Moving Vehicles with GVW up to 3500kg, Spec-Lifts, 4x4's

This low profile planetary winch has been developed for light industrial use. It incorporates a large electric motor, ensuring good service life.

T-MAX EW9500 KIT COMPRISES

Electric Winch, 3.7m wanderlead, roller guides and 8mm galvanised 1960Nmm² grade 6x36 core wire rope with safety latch hook.

Total kit weight 48kg.



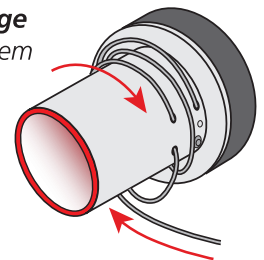
*Options include:
Emergency Stop, Safety Solenoid
and In-Cab Switch (not shown)*

ADDITIONAL EQUIPMENT & SERVICES

- BHW WINCH CONTROL SYSTEM (see below)
- Electric isolator switch
- Auxiliary industrial extension plug and socket kit for wanderlead connection
- Fuse and fuse holder
- Snatch block
- Radio Control Unit
- Full or partial fitting can be provided, including load testing and certification

FEATURES INCLUDE

- **EN14492-1 compliant**
- **Torque Load Limiter**
Supplied as standard
- **3 stage planetary gearing**
Providing high mechanical efficiency
- **Sealed Heavy Duty Solenoid**
- **Powerful series wound, high torque motor options**
12v or 24v
- **Power in / power out**
Fine control ensures load will not overrun
- **Automatic failsafe brake**
- **Freespool clutch lever**
Easy to operate lever disengages drum
- **4 way roller guides and mounting plate**
- **Secure wire rope anchorage**
Simple thread and wrap system for safe installation of wire rope



UPGRADE TO A BHW WINCH CONTROL SYSTEM

Save time and money on installation - Ready to fit.

A choice of three alternative winch control kits designed to provide all in one emergency stop, isolator switch, safety solenoid and power outlets.

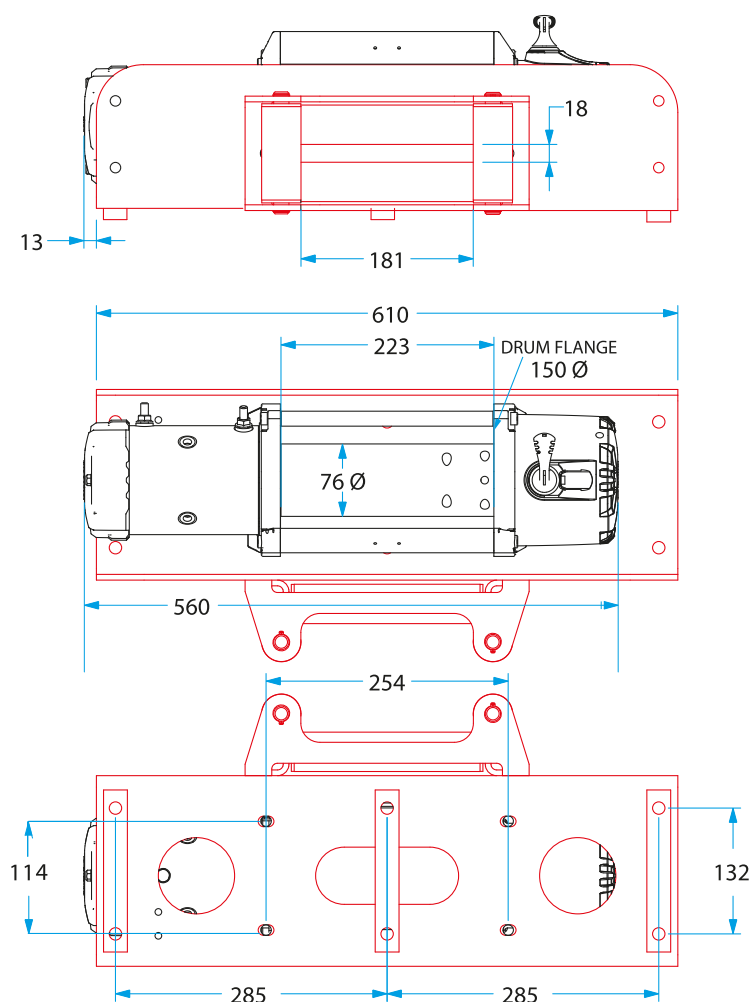
Bushey Hall Winchmaster sales@bhwgroup.com www.bhwgroup.com

Southern Office: Lismirrane Industrial Park, Elstree Road, Elstree, Herts, WD6 3EE Tel: +44 (0)20 8953 6050

Northern Office: 6 South Orbital Trading Park, Hedon Road, Hull, East Yorkshire, HU9 1NJ Tel: +44 (0)1482 223 663

Bushey Hall Winchmaster is a division of BHW Group Limited. Registered in England No. 1342461 VAT No. 301 7915 80





RATED LINE PULL & PERFORMANCE

		LAYER		
		1	2	3
Maximum Rated Line Pull by Layer*	kgf kN	2250 22	1860 18	1584 15.5
Cable Drum Capacity Cumulative by Layer (8mm Ø wire rope)	m	7	15.5	23

*By incorporating a snatch block in the line it is possible to double these capacities.

PERFORMANCE FIRST LAYER OF CABLE				
LINE PULL kgf	LINE SPEED (approx)		AMP DRAW (approx)	
	12v m/min	24v m/min	12v	24v
0	8.8	8.2	63	36
500	6.8	5.9	104	56
1000	5.6	5.2	145	76
1500	4.6	4.8	186	96
2000	4.2	4.3	227	116
2500	3.7	3.7	268	136

All figures are based on battery maintaining normal voltage.

SPECIFICATIONS

Rated Line Pull (single line): Maximum recommended working capacity 2250kgf to comply with EN14492-1.

Gear Ratio: 161:28 for either 12v or 24v.

Motor: High torque series wound 12v (6hp) or 24v (4.7hp).

Switching: Sealed, heavy duty double acting solenoids can be mounted adjacent to the winch, or on to the winch.

Wanderlead Control: Single switch with 3.7m lead supplied as standard. Other wanderleads / lengths and additional emergency stop button options available on request.

Roller Guides: 4 way supplied as standard.

Wire Rope: 8mm Ø galvanised 1960Nmm² grade, 6 x 36 wire core construction with 44.7kN minimum breaking strain, supplied as standard. Synthetic rope also available.

Freespooling: Sliding ring gear - lever on gear housing disengages clutch (in or out).

Complete Kit Weight: 48kg.

Torque Limiting Device: To comply with EN14492-1 and a 2:1 factor of safety for the wire rope.

NOTES

These winches must not be used for the movement of personnel and 5 wraps of wire rope must be maintained on the drum.

Data shown is approximate and intended as a guide only.

WARRANTY

Each new winch is guaranteed against defects in workmanship and material defects for a period of twelve months from date of purchase.

Wire ropes are not included under warranty.

Bushey Hall Winchmaster sales@bhwwgroup.com www.bhwwgroup.com

Southern Office: Lismirrane Industrial Park, Elstree Road, Elstree, Herts, WD6 3EE Tel: +44 (0)20 8953 6050

Northern Office: 6 South Orbital Trading Park, Hedon Road, Hull, East Yorkshire, HU9 1NJ Tel: +44 (0)1482 223 663

Bushey Hall Winchmaster is a division of BHW Group Limited. Registered in England No. 1342461 VAT No. 301 7915 80

