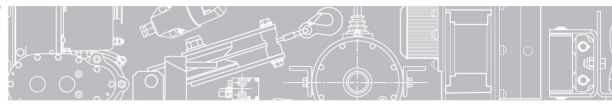




BHW

Bushey Hall Winchmaster

www.bhwgroup.com



FULTON

Performance Products

K2550 Work Winch Owner's Manual

Part No's:- 4941, 4940

10920 / 101018

Bushey Hall Winchmaster sales@bhwgroup.com www.bhwgroup.com

Southern Office: Lismirrane Industrial Park, Elstree Road, Elstree, Herts, WD6 3EE Tel: +44 (0)20 8953 6050 Fax: +44 (0)20 8207 5308

Northern Office: 6 South Orbital Trading Park, Hedon Road, Hull, East Yorkshire, HU9 1NJ Tel: +44 (0)1482 223 663 Fax: +44 (0)1482 218 285

Bushey Hall Winchmaster is a division of BHW Group Limited. Registered in England No. 1342461. VAT No. 301 7915 80



WARNING 3

MOUNTING INSTRUCTIONS 3

 CABLE ATTACHMENT TO DRUM..... 4

SERVICE PARTS AND ACCESSORIES 4

HOW TO ORDER PARTS 5

 PARTS BREAKDOWN DRAWING 5

TECHNICAL SPECIFICATION 6

OPERATING INSTRUCTIONS 6

MAINTENANCE 6

LIMITED ONE YEAR WARRANTY 7



WARNING

READ, UNDERSTAND AND SAVE THESE INSTRUCTIONS

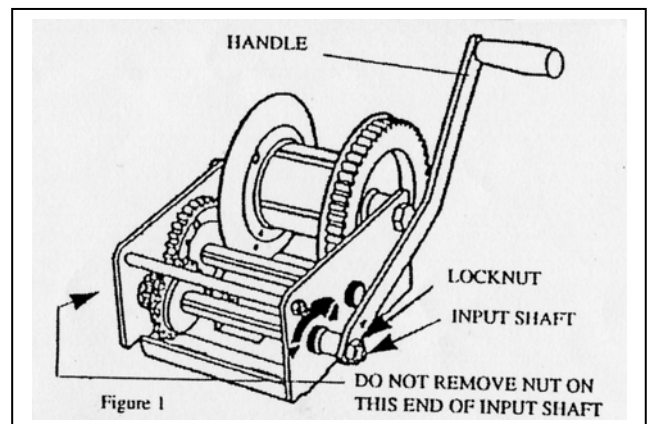
- Read, understand and follow all instructions before installing and/or using product. **NEVER** allow anyone unfamiliar with the operating instructions to use this product.
- Read, understand and follow all instructions provided by the manufacturer of the product(s) that this winch will be installed on.
- Installation, use and maintenance of these Fulton winches must conform to the following instructions only. Fulton cannot be held liable for improper installation, use, or maintenance of this product.
- Do not get oil or grease on the friction disks. This could allow the load to slip or fall.
- Obey crank rotation decal and operating instructions. Disregard could cause bodily harm or property damage and/or death.
- **DO NOT** use this winch as a human hoist. **NEVER** allow anyone to be positioned on, around or under the load being lifted or moved.
- **NEVER** exceed the maximum rated capacities.
- Always inspect the cable and hook before each use to make sure that they are not damaged. If the cable or hook breaks, the cable will whip violently and can inflict serious injury and/or property damage.
- Never use worn, kinked, or frayed cable. Replace the cable immediately.
- Always maintain a minimum of three complete wraps of cable on the drum.
- The cable on the winch must be strong enough to support the load to be moved.
- A loud clicking sound from the ratchet must be heard when lifting the load. If a loud clicking sound is not heard do not use and replace ratchet components immediately.
- Never release the crank handle unless the ratchet pawl is fully engaged and the load is supported.
- Never operate with slippery, wet or oily hands and always maintain a firm grip on the winch handle.
- Never leave a weight hanging from the winch while the winch is unattended, as another person may attempt to operate the winch, thereby creating an unsafe condition.
- Failure to follow these warnings and instructions will result in property damage, serious bodily injury and/or death.

MOUNTING INSTRUCTIONS

- 1) Assemble handle onto input shaft end. Tighten the ½ -13 locknut against handle. Note: Do not remove or adjust the locknut on the opposite end of input shaft. They are an important part of the braking system and must be intact. See Fig 1.
- 2) Mount the winch to a structure capable of supporting at least 5 times the load the winch will be pulling.

Note: When bolting the winch down, use three grade 5, 3/8 diameter bolts, flat washers and locknuts (not supplied).

Note: Always use outer most slots at the end opposite the direction of line pull. Use large flat washer if using centre slot at opposite end.



CABLE ATTACHMENT TO DRUM

- 1) Feed the cable under the drum, through drum side hole, and through cable clamp with one inch extending past clamp.
- 2) With keeper nuts and lock washers outside the drum side, tighten nuts snug until cable is adequately clamped (approx. 20-30 lb-in).
- 3) Always be sure the cable is pulling straight off the winch, not at an angle. This will prevent the cable from rubbing against the sides of the drum, which can damage the cable.



SERVICE PARTS AND ACCESSORIES

ITEM	DESCRIPTION	QTY	P/NO.	REPAIR KIT
1	Handle Assy – 11"	1	2461	
2	Bolt – Carriage No. 10-24x.687LG	2	5606	5621-01
3	Rope Keeper Clamp	1	5604	Cable Keeper Kit
4	Lockwasher Internal tooth No. 10	2	731	
5	Nut No. 10-24 Hex	2	806	
6	Shaft input K2550 Zinc	1	9928	1565S01
7	Retaining ring ¾ shaft	1	57	Input shaft
8	Disc – Shaft, brake	1	2450	Kit
9	Gear – Ratchet, 17 tooth, 5/8 ID	1	0472110	
10	Pinion gear & disc – 10 tooth	1	0472108	
11	Bushing - .75 ID x .63 LG, PM	2	0443103	
12	Spacer – Disc Trt. 50 ID x 0.75 OD x 0.93	1	0427006	
13	Locknut – ½ - 13, Centre Lock	1	952	
14	Disc – Friction	2	0431004	1578S00 Kit
15	Bushing - .63 ID x .63 LG, PM	1	0443102	
16	Bushing - .75 ID x .63 LG, PM	3	0431003	
17	Washer – Thrust, .63 ID x 1.10 OD	1	0427003	Intermediate
18	Assy – Shaft/Gear intermediate	1	9524	Shaft
19	Roll Pin – 1/8 dia. x .875 LG	1	212	Kit
20	Key – Woodruff No. 405.125 THK x .237	1	4144	1568S01
21	Rivetment – 31T,3LAM., .75 ID	1	9929	
22	Locknut – 5/16-18, Centrelock	2	36	
23	Spacer ratchet 0.32 ID x 0.56 OD x 0.22	1	6635	Ratchet
24	Ratchet Pawl	1	6513	Kit
25	Ratchet spring – K2550, SS	1	6542	6730S00
26	Bolt – Shoulder, 5/16-18 x 1.28 LG GR5	1	6518	
27	Capscrew 5/16-18 x 0.50 LG HEX GR5	1	218	
28	Locknut 5/16-18, Centrelock	1	36	
29	Bolt 5/18-11 x 7.75 LG HEX GR2	1	6395	
30	LOCKNUT-5/8-11, Centrelock	1	83	
31	Spacer Drum 0.63 ID x 0.75 OD x 6.69LG	1	6394	
32	Weldment – Drum K2550	1	9514	
33	Locknut – 5/16-18, Centrelock	1	36	
34	Spacer Frame 33 ID x .38 OD x 3.34 LG	2	6586	
35	Capscrew 5.16-18 x 7.50 LG HEX GR2	1	6587	
36	Frame – K2550	1	12361	

Bushey Hall Winchmaster sales@bhwwgroup.com www.bhwwgroup.com

Southern Office: Lismirrane Industrial Park, Elstree Road, Elstree, Herts, WD6 3EE Tel: +44 (0)20 8953 6050 Fax: +44 (0)20 8207 5308

Northern Office: 6 South Orbital Trading Park, Hedon Road, Hull, East Yorkshire, HU9 1NJ Tel: +44 (0)1482 223 663 Fax: +44 (0)1482 218 285

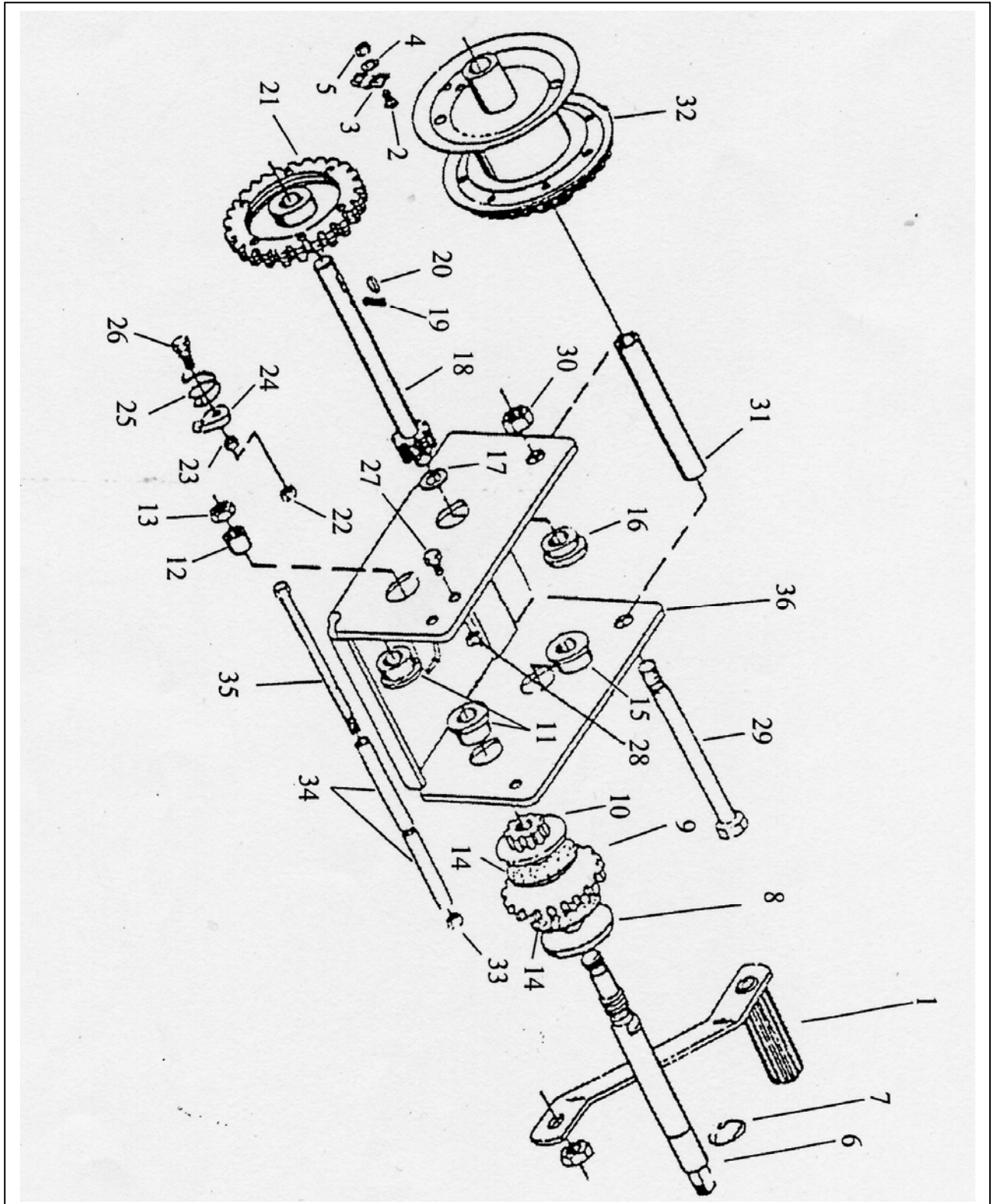
Bushey Hall Winchmaster is a division of BHW Group Limited. Registered in England No. 1342461. VAT No. 301 7915 80



HOW TO ORDER PARTS

Always replace broken, bent or worn parts before using this product. Use only Fulton Performance Products parts or parts of equal quality for repair. Replacement parts are available through BHW Group Ltd on 020 8953 6050. Please specify product model number, name of parts, and part number. A two digit year code is stamped into the frame to aid in model identification.

PARTS BREAKDOWN DRAWING



Bushey Hall Winchmaster sales@bhwwgroup.com www.bhwwgroup.com

Southern Office: Lismirrane Industrial Park, Elstree Road, Elstree, Herts, WD6 3EE Tel: +44 (0)20 8953 6050 Fax: +44 (0)20 8207 5308

Northern Office: 6 South Orbital Trading Park, Hedon Road, Hull, East Yorkshire, HU9 1NJ Tel: +44 (0)1482 223 663 Fax: +44 (0)1482 218 285

Bushey Hall Winchmaster is a division of BHW Group Limited. Registered in England No. 1342461. VAT No. 301 7915 80



TECHNICAL SPECIFICATION

FULTON MODEL NUMBER	CAPACITY RATING (*1)		GEAR RATIO	MAXIMUM MECHANICAL ADVANTAGE (*2)	HANDLE LENGTH	HUB SIZE	DRUM STORAGE (*3).
	1 ST LAYER DRUM LBS. (kN)	FULL LBS (kN)					
K2550	2500 (11.1)	1500 (6.7)	15.8:1	64:1	11"	3-1/8"	70'X5/16"Cable (Max 4 layers)

*1 – Capacity Rating – Based on direct line pull on first layer of line on the drum. Capacity is reduced as layers of line builds up on the drum.

*2 – Maximum Mechanical Advantage – Based on first layer of recommended line on the drum. For maximum efficiency use only the amount of line required.

*3 – Breaking strength of cable must be greater than 7,756 lbs (34,5 kN).

OPERATING INSTRUCTIONS

Turning the handle counter-clockwise actuates the brake. The brake system is designed to hold the load whenever the handle is released.

TO PULL CABLE IN OR RAISE LOAD

- 1) The cable must be securely fastened to the object being lifted and to the winch drum.
- 2) Always be sure that the cable and cable attachments are not damaged and are strong enough for the load.

Assure there is adequate safety factor, of at least three times the maximum load for all components used.

- 3) Referring the "Cable In/Cable Out" decal on the winch, turn the handle clockwise to lift. The ratchet MUST make a loud clicking sound.

TO LET CABLE OUT OR LOWER LOAD

- 1) Referring to the "Cable In/Cable Out" decal on the winch, turn the handle counter-clockwise to lower. No clicking will be heard because the brake system is activated.

MAINTENANCE

Do not get oil or grease on the friction disks. This could allow the load to slip or fall.

- 1) Maintain a film of automotive type grease on all gear teeth and to the O.D. of drum bearing item no. 31, at all times.
- 2) Keep ratchet pawl pivot, bushings and pinion threads lubricated with automotive engine oil at all times.
- 3) Check brake friction disks for wear. If less than 1/16" thick, cracked, or broken, they must be replaced.
- 4) During each usage, check for proper ratchet operation. When cranking cable in, a loud clicking sound must be heard from the ratchet. If a loud clicking sound is not heard, do not use and replace damaged components immediately. When cranking cable out, there is no clicking and the ratchet pawl must be fully engaged into the ratchet gear teeth.
- 5) Before each usage, inspect fasteners for proper tightness.

LIMITED ONE YEAR WARRANTY

BHW Group Limited, the authorised Fulton Servicing Distributor in the UK and Ireland warrants each new winch and ancillary equipment supplied against factory defects in material and workmanship for one year from date of purchase.

The responsibility for removing the winch or ancillary equipment is the owner's together with its return, transportation prepaid to the BHW Group.

BHW Group will, under this Warranty, without charge repair or replace at its option, parts which on inspection are deemed to be defective. The loss of use of the product, loss of time, inconvenience, commercial loss or consequential damages are not covered.

Warranty does not apply where the product has been tampered with or altered in any way, or where the serial number or date stamp has been defaced, altered or removed, or if in the view of BHW Group the damage or failure occurred from misuse, negligence or accident.

THIS WARRANTY EXCLUDES THE WIRE ROPE.

Fulton Performance Products and BHW Group Limited reserve the right to change the design of any product without assuming any obligation to modify any product previously supplied. Winches or equipment returned under warranty should be despatched to BHW Group Service Department at the address indicated below, with full name and address of sender and a statement detailing the defect.

BHW Group Ltd
Lismirrane Ind Park
Elstree Road
Elstree
Hertfordshire
WD6 3EE

Tel: +44(0)20 8953 6050
Fax: +44(0)20 8207 5308
Email: sales@bhwwgroup.com
Web: www.bhwwgroup.com

Bushey Hall Winchmaster sales@bhwwgroup.com www.bhwwgroup.com

Southern Office: Lismirrane Industrial Park, Elstree Road, Elstree, Herts, WD6 3EE Tel: +44 (0)20 8953 6050 Fax: +44 (0)20 8207 5308

Northern Office: 6 South Orbital Trading Park, Hedon Road, Hull, East Yorkshire, HU9 1NJ Tel: +44 (0)1482 223 663 Fax: +44 (0)1482 218 285

Bushey Hall Winchmaster is a division of BHW Group Limited. Registered in England No. 1342461. VAT No. 301 7915 80

