

## OPERATING INSTRUCTIONS



### DELTA LIGHT DUTY JOBBER HOISTS 500kg or 1000kg 110V or 240V

DU901: #10021 (500kg / 110V), #10022 (500kg / 240V)  
DU902: #10023 (1000kg / 110V), #10024 (1000kg / 240V)

CONFORMING TO  
BS EN14492 Cranes – Power Driven Winches and Hoists – Part 2: Power Driven Hoists

**Bushey Hall Winchmaster** [sales@bhwgroup.com](mailto:sales@bhwgroup.com) [www.bhwgroup.com](http://www.bhwgroup.com)

**Southern Office:** Lismirrane Industrial Park, Elstree Road, Elstree, Herts, WD6 3EE Tel: +44 (0)20 8953 6050

**Northern Office:** 6 South Orbital Trading Park, Hedon Road, Hull, East Yorkshire, HU9 1NJ Tel: +44 (0)1482 223 663

Bushey Hall Winchmaster is a division of BHW Group Limited. Registered in England No. 1342461 VAT No. 301 7915 80



## CONTENTS

<b>INTRODUCTION</b>	3
<b>STANDARDS &amp; BHW GROUP LTD</b>	3
<b>RESPONSIBILITY FOR UKCA AND CE COMPLIANCE</b>	3
<b>HOIST INFORMATION</b>	
HOIST SPECIFICATIONS	4
HOIST DIMENSIONS	5
HOIST LABELS	5
<b>OPERATION OF HOIST</b>	
SAFETY NOTES	6
PRE OPERATION CHECKS	7
HOIST & CHAIN LUBRICATION	7
CONNECTION TO THE ELECTRICITY SUPPLY	7
SUSPENSION POINTS	7
COMMISSIONING THE HOIST	8
FITTED FUSES IN THE HOIST	9
ELECTRIC CIRCUIT DIAGRAM	9
<b>MAINTENANCE</b>	
MONTHLY MAINTENANCE	10
CARE OF THE CHAIN	10
NOTES ON SPARES	10
<b>WINCH PARTS</b>	
DU901 (SINGLE FALL) PARTS DIAGRAM	11
DU901 (SINGLE FALL) PARTS LIST	12-13
DU902 (DOUBLE FALL) PARTS DIAGRAM	14
DU902 (DOUBLE FALL) PARTS LIST	15-16
<b>WARRANTY</b>	17

## INTRODUCTION

### **PLEASE READ THIS MANUAL CAREFULLY BEFORE INSTALLATION OR OPERATION OF THE WINCH**

Those responsible for the installation and the operation of this winch must read and understand this manual. The first section deals with the installation requirements and the second section is for the user and provides information to ensure safe use of the winch.

These winches are of the highest quality and have been designed to give a robust and efficient service for many years if care and attention are given at all times to correct installation, operation and maintenance.

### **PLEASE KEEP THIS MANUAL WITH THE WINCH**

**NOTE: Hire companies should make the hirer fully aware of the safety issues and correct operation of this winch as detailed in this manual and ensure that the proposed operator is suitably trained.**

## STANDARDS & BHW GROUP LTD

The British Standard: BS EN14492-2 for power driven hoists provides the means for conformity to essential Health and Safety requirements of the EN Machinery Directive and the essential Health & Safety at Work Act 1974.

Selecting the correct hoist for the application is very important not only from the health and safety aspect, but also to maximise product life and ensure the best value for money.

BHW Group Ltd products are fully compliant and carry a UKCA and CE mark. A Declaration of Conformity is also supplied with each product. BHW Group Ltd aim to ensure the correct machine is supplied to suit the application and we welcome the opportunity of discussing the proposed application and offer advice. It will help us considerably if information regarding the maximum and average loads to be lifted or pulled - and approximate frequency of use can be provided.



## RESPONSIBILITY FOR UKCA AND CE COMPLIANCE

1. Check that all components of the hoist are sound and in good working order.
2. Install and check hoist in accordance with instructions.
3. Load chain as per installation instructions.
4. Hooks must have a safety latch and a minimum rated capacity of 1.0 tonne.  
Use only high tensile grade 80 or 100 to comply with BS EN14492-2 standards.  
(Hooks supplied as standard from BHW Group Ltd are rated and stamped for lifting and have a safety factor of 4:1. A 1 tonne hook has therefore a minimum yield of  $1 \times 4 = 4$  tonne line pull).
5. Fully test and check all wanderlead operations including Emergency Stop
6. Ensure that hoist has suitable circuit breaker or fuse as part of the power supply.
7. Install and test the hoist to check the integrity of the selected mounting and ensure that fixings are capable of supporting the intended loads.

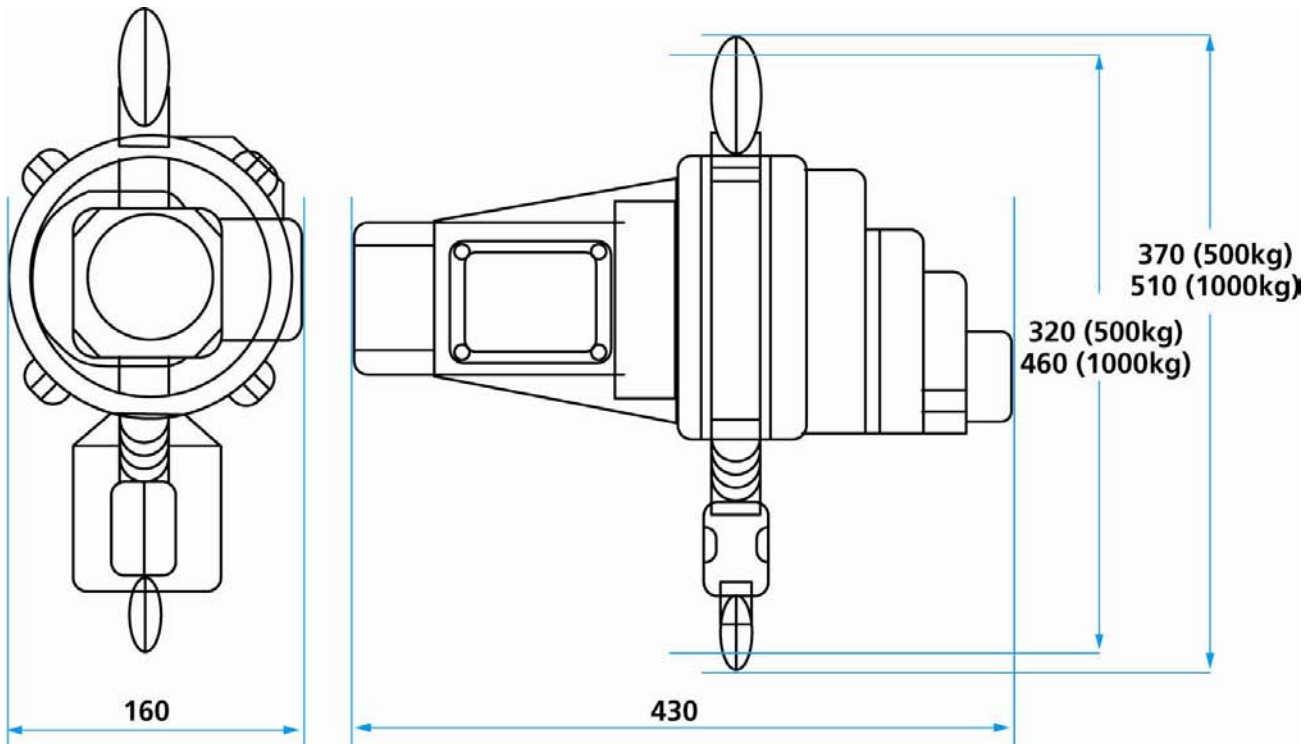
## HOIST INFORMATION

### HOIST SPECIFICATIONS

<b>Models</b>	<b>Delta Light Duty Jobber Hoists – DU901 (Single Fall) and DU902 (Double Fall) 110V or 240V, 1ph BS EN14492-2 Compliant</b>	
<b>Typical Uses</b>	Vertical hoisting of loads. Professional 'jobbing' hoists.	
<b>Construction</b>	Steel gears running in oil, in alloy housing	
<b>Motor</b>	110V or 240V, 1ph AC.	
<b>Outputs</b>	1.3kW for all models, with 12A (110V) and 6A (240V) draw.	
<b>Lifting Specifications</b>	<b>DU901</b>	<b>DU902</b>
Capacity	500kg	1000kg
Height	16m	8m
Type of fall	Single	Double
Approx line speed	6m/min	3m/min
<b>Wanderlead</b>	Tough, 3 button hand held control with 6m lead. Includes Emergency Stop. Other lengths are available on request.	
<b>Recommended Chain</b>	Lengths supplied as standard according to requested lengths for single or double fall: Grade 80 HT Galvanised. Links are 6.3mm dia x 19.1mm length.	
<b>Hooks</b>	1 tonne rated with safety latch. Use only high tensile grade 80 or 100 to comply with BS EN14492-2 standards. Chain hook supplied as standard has a 360° swivel.	
<b>Duty Cycle</b>	Duty cycle of 25%, with a maximum of 60 starts per hour.	
<b>IP (Ingress Protection Rating)</b>	<b>54</b> - Protected against dust limited ingress (no harmful deposit) and protection from water sprayed from all directions (limited ingress permitted).	
<b>Insulation Class</b>	<b>F</b> - Maximum operation temperature of 155° C (311° F). Allowable temperature rise at full load 1.0 service factor motor = 105° and at full load 1.15 service factor motor = 115°.	
<b>Lubrication &amp; Recommended Oils</b>	Gear Box: EP80/140 or equivalent Chain: Use open gear / wire rope lubricant spray	
<b>Weight</b>	<b>DU901</b> = 20kg,	<b>DU902</b> = 24kg
<b>Overall Dimensions [mm]</b>	500kg: 370 [h] x 430 [d] x 160 [w] 1000kg: 510 [h] x 430 [d] x 160 [w].	
<b>Noise Level</b>	80db	
<b>Ambient Temp. Operating Range</b>	-10°C to 155°C	

## HOIST INFORMATION

### HOIST DIMENSIONS



### HOIST LABELS



## OPERATION

### OPERATION OF HOIST

#### SAFETY NOTES

The hoist should be operated only by designated and fully trained operators.

Operators should wear suitable protective work wear for the lifting environment including safety head and footwear.

The operators should not engage in any other practice which will divert attention from operating the hoist.

Operators are advised to check that the top hook is safely attached to the suspension point, that the safety catch on the hook is fully closed and the suspension point is fully capable of supporting the lifting operations.

The power supply lead should be firmly clipped into the socket, and the wanderlead screwed tight to its socket and clipped to the housing before use.

Prior to use, the operator should check each operation mode (lift / descend / emergency stop) to ensure that all hoist activities are fully operational. Operators should also make sure that loads are safe to move and that the working area is clear of personnel and obstructions.

Operators should not attempt to use the hoist if any aspect of the lifting operation or its surrounding environment is deemed unsafe.



Hoists should NEVER be used for the transport or lifting of personnel.

Chains, ropes and slings used for lifting should be continually inspected for damage or attrition that could make them unsafe to work with. Damaged items should be replaced, not repaired.

The hoisting chain must form a straight line from the load hook to the suspension point before the lift is performed.

Loads should NEVER pass over the heads of personnel or in any way endanger their safety.

Make sure that the hoist is fully capable of lifting the intended load. Do not attempt to lift loads that are beyond the hoist capacity.

All loads should be securely hitched and properly balanced, with the hook safety latch closed, before any lift is made. Use suitable chains or strops to engage the load on to the lifting hook. **Never wrap the chain around the load to engage the hook.**

When lifting, care must be taken to ensure that the load does not foul any obstructions.

Using the wanderlead, stand away from the load and use the lift or descend buttons according to need. **NEVER stand underneath or close to the load.**

Avoid slipping the clutch at the top or bottom of hoist. The clutch is a protective device and not an operational feature. Repeated slipping of the clutch will reduce the ability of the hoist to sustain a load and may eventually cause the hoist to fail.

Before leaving a hoist unattended, the operator should lower any load onto the floor or onto an appropriate support and disconnect the hoist. The unloaded hook should be raised clear of all passing personnel and traffic.

The hoist should be fully switched OFF when not in use. Chains and wanderleads, strops, slings and ropes should be neatly stowed away to avoid any trip hazard.

## OPERATION

### PRE OPERATION CHECK

- Check for any transit damage.
- Check that all fasteners and joints are tight and secure.
- Check the capacity of the lifting unit.
- Check that all external wiring is in good order.
- Check the load chain and ensure that chain end block is secured safely on to chain.
- Check that the hooks are in good order and that chain swivel is unimpeded.



### HOIST & CHAIN - INITIAL LUBRICATION

Hoist parts must be suitably lubricated before the hoist is put into use.

**Load Chain** - The full length of chain must be lubricated; including its contacting part with the chain wheels. Ensure that the contact points between the links (i.e. chain saddles) are adequately lubricated with an open gear/wire rope lubricant spray.

**Gearbox** - For ambient temperature of approx.  $-10^{\circ}$  to  $+50^{\circ}$ , a gear oil of  $\text{mm}^2/\text{S}$  at  $40^{\circ}$  with mild high-pressure additives should be used.

*Examples: Din 51502 Clp 220, E.G. BP Energol Gr-Xp 20, Esso Spartan Ep 220, Shell Omala Oil 220, Mobilgear 630 or Aral Degol Bg 220.*

Under higher or lower than ambient temperatures, the type of oil used for the gearbox should be adapted to the specific conditions.

### CONNECTION TO THE ELECTRICAL SUPPLY – 110V, or 230V / 240V?

An AC, 1ph supply is required at the appropriate voltage for the hoist.

The supply voltage and frequency at which the hoist operates is marked on the motor rating plate as **either 110V or 230V / 240V x 1ph.**

**It is imperative to check before connecting the unit that these figures correspond with those of the supply voltage.**

Cables supplying the hoist with power should be kept clear of the operating area and not impede the hoist.

A suitable circuit breaker or fuse should be installed in the power supply to the hoist, and checked regularly. An additional fuse is incorporated into the power socket of the hoist (See page 9).

### SUSPENSION POINTS

The suspension point should be of a correct size to admit the top hook of the hoist and allow it to rest properly on the saddle with the safety catch closed. It must be adequate to support the hoist and the proposed loads to at least 110% of its maximum capacity (Safe Working Load).

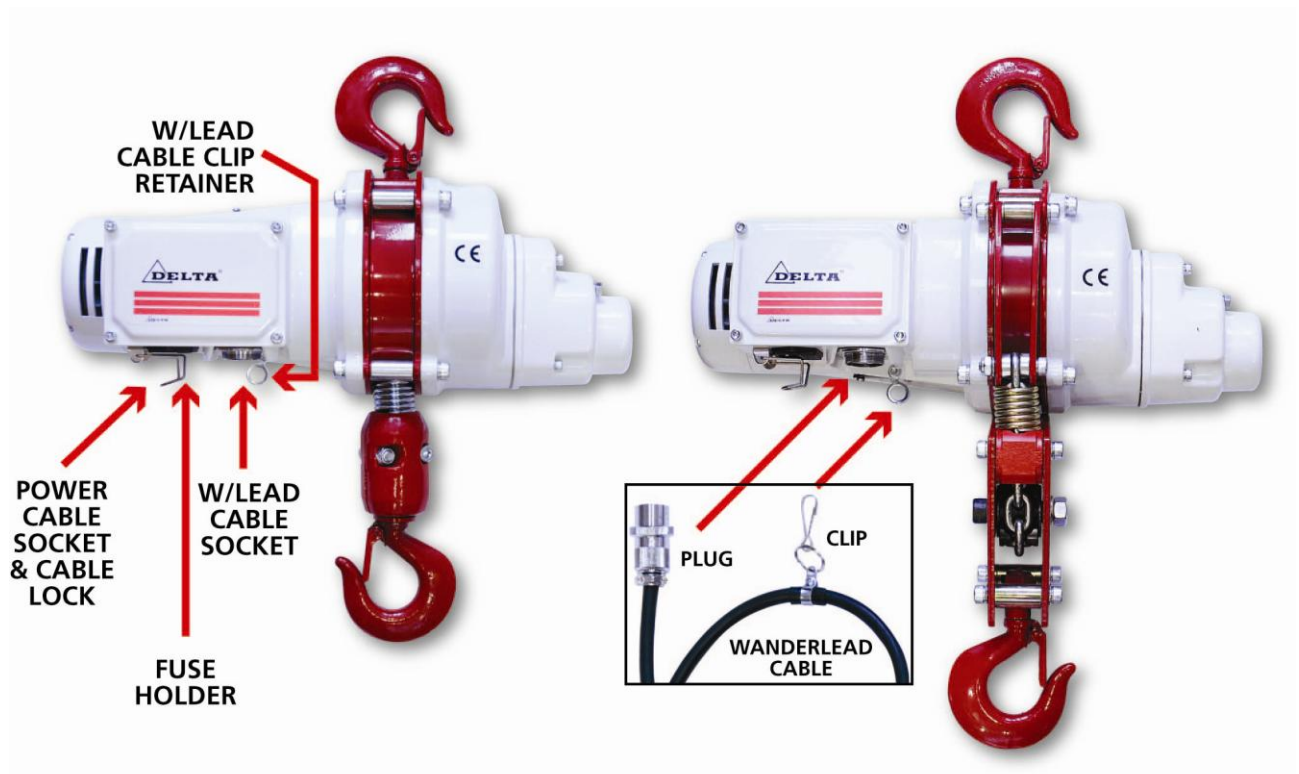


## OPERATION

### COMMISSIONING THE HOIST

On completion of pre-installation, but before the hoist is put into regular service, the following procedure should be carried out.

- Isolate the power supply.
- Check that all mechanical and electrical joints and connections are tight and secure.
- Connect the wanderlead control to the underside of the hoist, screw the threaded fitting home and attach cable retention clip to fitting ring as shown below.
- Connect the power cable to the underside of the hoist and lock into place using spring clip.
- Switch on power supply:
- Run the full extent of hoist without a load and check that the operation is smooth at all times. A slight tension on the chain is advised to ensure smooth connection with the wheels.
- Check operation of hoist stop (i.e. ceasing to operate either lift or descend buttons), under both light load and full load conditions.
- Check operation of hoist emergency stop, under both light load and full load conditions.



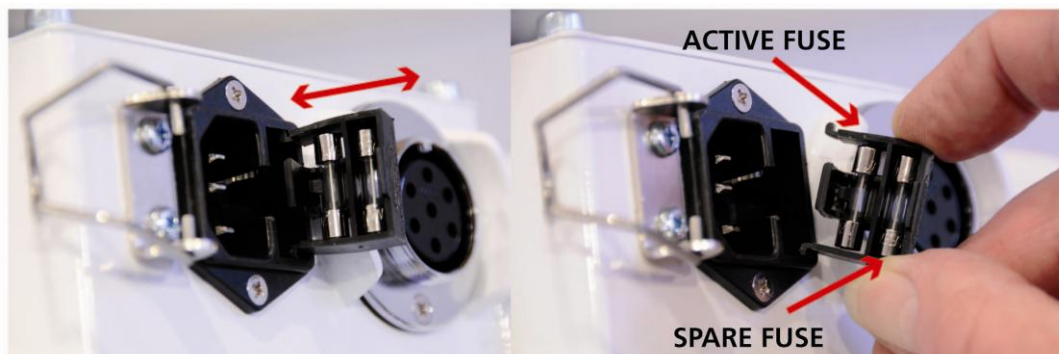


## OPERATION

### INTEGRAL FUSE IN THE HOIST

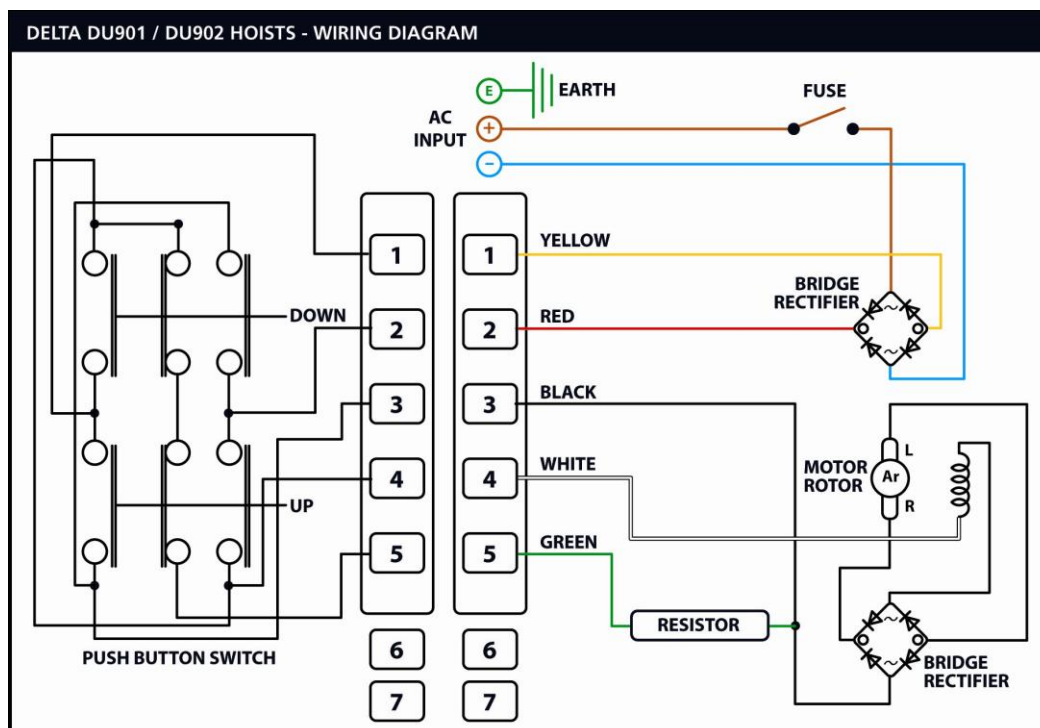
There is an additional fuse loaded into the power socket on the underside of the hoist. The holder also contains a spare fuse (at point of issue). To access, **disconnect power supply** and lever out the fuse holder. The active fuse can then be replaced as necessary.

**DO NOT ATTEMPT TO GAIN ACCESS TO FUSES WHEN POWER SUPPLY IS STILL CONNECTED.**



## CIRCUITRY

The basic circuit detail is shown below:

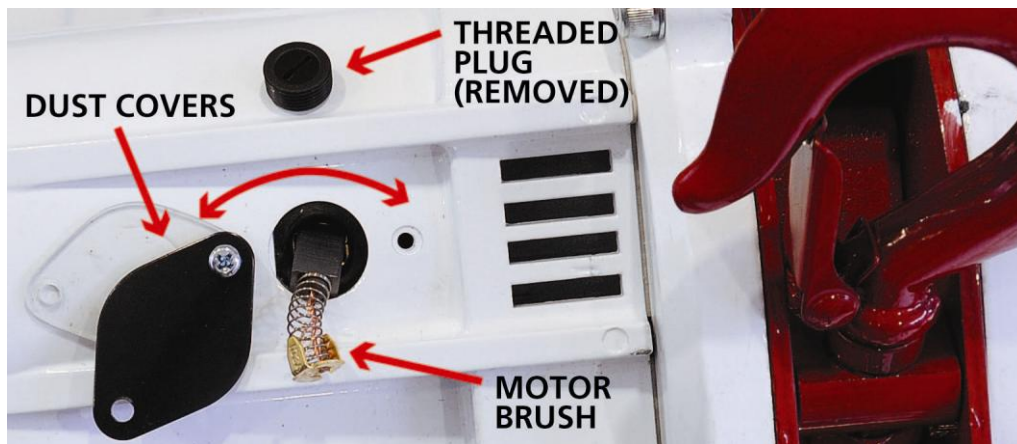


## MAINTENANCE

### REGULAR MONTHLY MAINTENANCE

Externally: The hoist should be kept clean in order to prevent any build up of corrosion on external working parts.

- Check hoist for external damage.
- Check suspension hook facility for any damage or distortion.
- Check that safety catches on both hooks are fully operational
- All external-moving parts should be lubricated with lightweight oil.
- All Electrical connections and wiring should be inspected for loose connections, corrosion or fretting.
- Check the emergency STOP control to ensure it functions correctly by operating the hoist and pushing the STOP button.
- Check oil level in gearbox and replenish as necessary.
- Check commuter brushes located behind cover plates on the top and bottom of hoist housing, replace if badly worn: **DISCONNECT POWER SUPPLY FIRST**



### CARE OF THE CHAIN

- Inspect chains and chain guides. It is most important that the chain is inspected on a regular basis, for any damage, stretching or broken links. Damaged chains should be replaced.
- Always employ a chain or webbing strap from the chain hook to the load. Never wrap the chain around the load.

**CHAINS ARE NOT COVERED BY WARRANTY.**

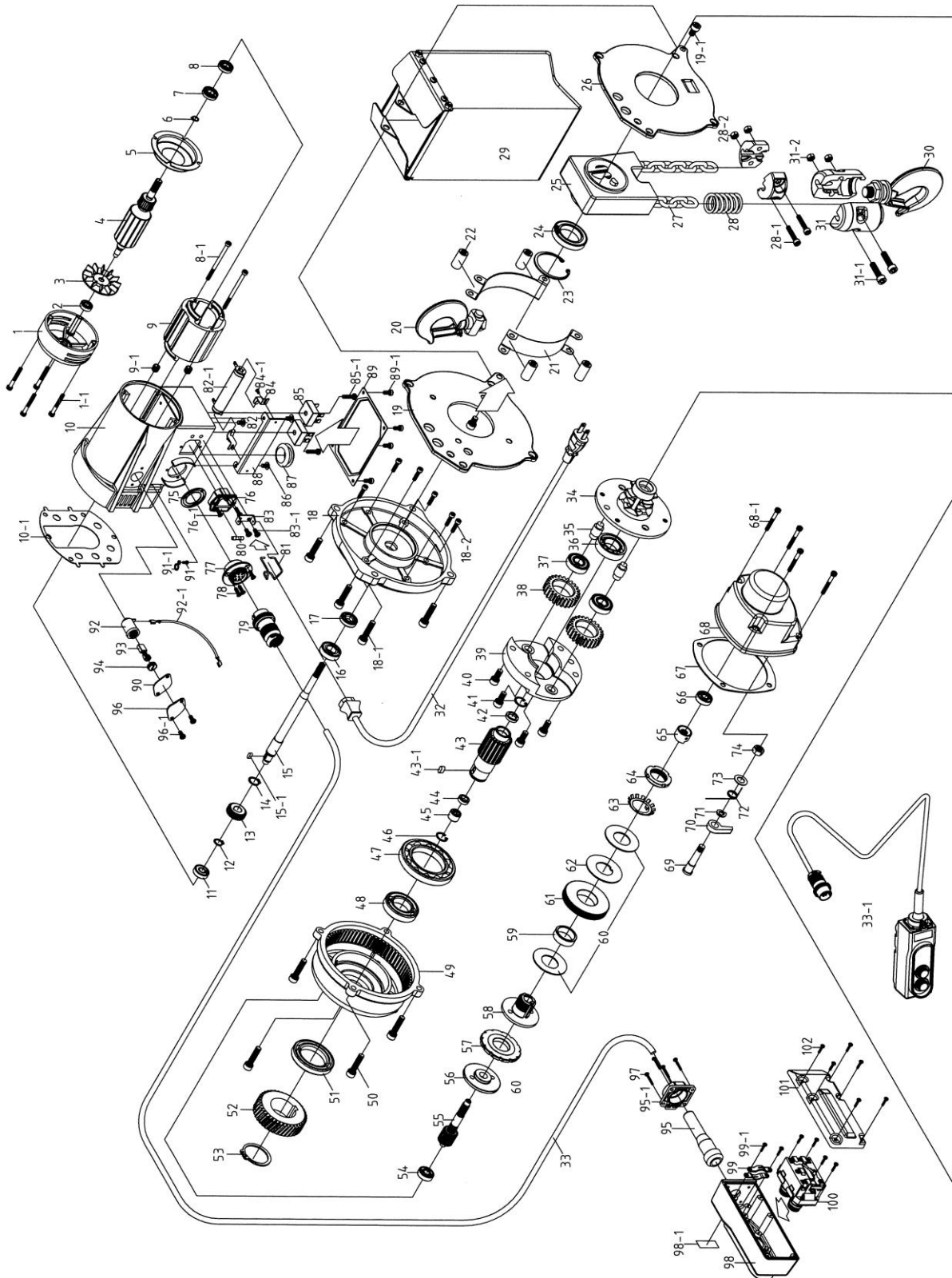
### SPARES

If it becomes necessary to obtain replacement parts, refer to diagrams and lists shown on pages 10 to 16 for the winch, please note that parts and part numbers are different for DU901 (single fall) and DU902 (double fall) hoists.

Please contact us quoting serial numbers and model number. BHW Group Ltd reserve the right to change specifications without notice.

## HOIST PARTS

### DU901 500kg - SINGLE FALL PARTS DIAGRAM



## WINCH PARTS

### DU901 500kg - SINGLE FALL PARTS LIST

List No.	Part No	Description	QTY	List No.	Part No	Description	QTY
1	12769	MOTOR COVER	1	27	2190	CHAIN (6.3MM)	1
1.1	12770	SCREW	4	28	12306	CHAIN GUIDE SPRING	1
2	12771	BEARING	1	28a	12307	CHAIN BLOCK ASSEMBLY	1
3	12772	FAN OF ROTOR	1	28.1	N/A	SCREW	2
4	12488	ROTOR 110V	1	28.2	N/A	WASHER	2
4	12487	ROTOR 240V	1	28.3	N/A	CHAIN STOPPED BLOCK	2
5	12773	AIR GUIDING IRON COVER	1	29	3173	CHAIN BAG SET 15M CHAIN CAPACITY	1
6	12774	FIXING SPRING	1	29	3172	CHAIN BAG SET 35M CHAIN CAPACITY	1
7	12775	BEARING	1	29.1	N/A	CHAIN BAG	1
8	11146	OIL SEAL	1	29-2	N/A	ROD OF CHAIN BAG	2
8.1	12776	SCREW	2	29.3	N/A	ROD OF CHAIN BAG	2
9	12777	STATOR 110V	1	29.4	N/A	ROD OF CHAIN BAG	2
9	12778	STATOR 240V	1	29.5	N/A	WASHER	1
9.1	12779	SCREW	2	29.6	N/A	WASHER	4
10	12780	MAIN BODY BASE	1	30	3170	LOWER HOOK ASSEMBLY	1
10.1	12781	INSULATED SHEET	1	31	N/A	LOWER HOOK SUSPENSION	2
11	12782	BEARING	1	31.1	N/A	SCREW	2
12	12783	CIRCLIP	1	31-2	N/A	WASHER	2
13	12784	GEAR	1	32	12877	POWER CABLE ASSEMBLY 110V	1
14	12785	CIRCLIP	1	32	12878	POWER CABLE ASSEMBLY 240V	1
15	12786	FIRST SECTION GEAR SHAFT	1	33	N/A	CONTROL CABLE	1
15.1	12787	KEY	1	33-1	11714	CONTROL CABLE ASSEMBLY	1
16	12788	BEARING	1	33-2	N/A	LANYARD CLIP	1
17	12789	OIL SEAL	1	33-3	N/A	BINDER OF CABLE	1
18	12790	GEAR COVR	1	34	12801	CHAIN GUIDER	1
18.1	12791	BOLT	4	35	12802	ROD OF GEAR SHAFT	2
18.2	12792	BOLT	6	36	12803	BEARING	1
19	12793	LEFT MAIN BODY SHEET	1	37	12804	BEARING	2
20	12794	UPPER HOOK	1	38	12805	GEAR	2
21	12795	MAIN BODY COVER	1	39	12806	FIXING BASE OF GEAR SHAFT	1
22	12796	FIX ROD OF MAIN BODY	4	40	12807	BOLT	4
23	12797	CIRCLIP	1	41	12808	CIRCLIP	1
24	12798	BEARING	1	42	12809	OIL SEAL	1
25	12799	CHAIN SHEAVE	1	43	12810	THIRD SECTION GEAR SHAFT	1
26	12800	RIGHT MAIN BODY SHEET	1				

Continued...

## WINCH PARTS

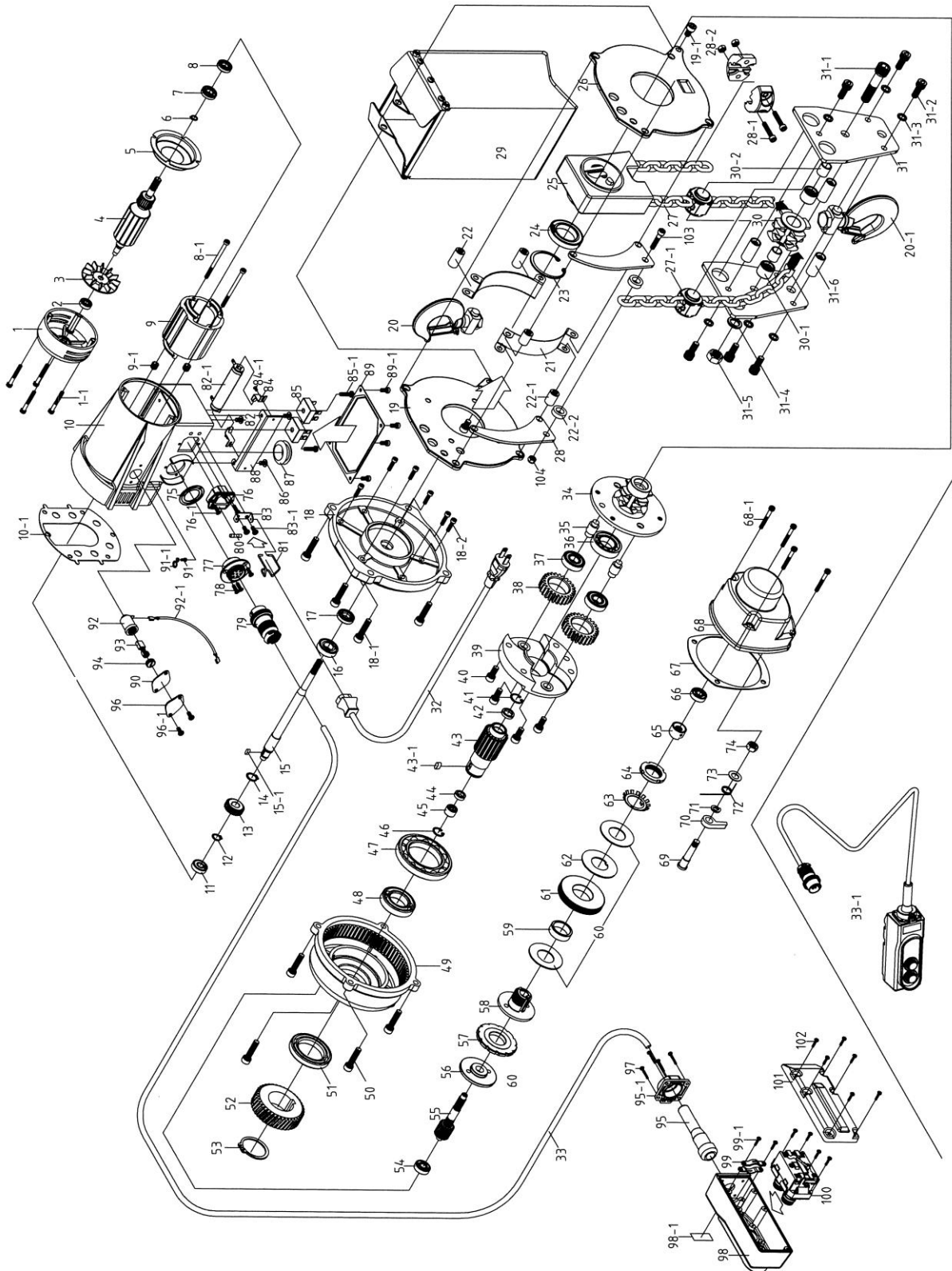
### DU901 500kg - SINGLE FALL PARTS LIST – Continued

List No.	Part No	Description	QTY	List No.	Part No	Description	QTY
43-1	12811	KEY	1	77	2358	SWITCH CONNECTOR SOCKET	1
44	12812	OIL SEAL	1	78	12846	SCREW	3
45	12813	BEARING	1	79	12847	CONTROL PLUG	1
46	12814	CIRCLIP	1	80	12848	FUSE	1
47	12815	BEARING	1	81	12849	CABLE CLIP	1
48	12816	BEARING	1	82	12490	RESISTOR	1
49	12817	RING GEAR	1	83	12850	FIX PLATE	1
50	12818	BOLT	4	83-1	12851	SCREW	2
51	12819	BEARING	1	84	12852	FIX PIN	1
52	12820	THIRD SECTION GEAR	1	84-1	12853	SCREW	1
53	12821	CIRCLIP	1	85	12854	BRIDGE TYPE REGULATOR	2
54	12822	BEARING	1	85-1	12855	SCREW	2
55	12823	THIRD SECTION GEAR SHAFT	1	86	12856	SCREW	2
56	12824	PLATE	1	87	12857	PLASTIC TUBE	1
57	12825	PAWL BRAKE LINING	1	88	12858	BASE PLATE	1
58	12826	BRAKE DEPRESSOR (LOWER)	1	89	12859	ELECTRIC BOX COVER	1
59	12827	COPPER SLEEVE	1	89-1	12860	SCREW	4
60	12828	PRESS DISK TYPE SPRING	2	90	12861	CARBON BRUSH SET PROTECTION	2
61	12829	KEYLESS GEAR	1	91	12862	NUTS	2
62	12830	NUTS FIXING SHEET	1	91-1	12863	NUTS	2
63	12831	NUTS	1	92	12864	CARBON BRUSH HOLDER	2
64	12832	TORQUE LIMITED NUTS	1	93	12489	CARBON BRUSH	2
65	12833	BAKE DEPRESSOR (UPPER)	1	94	12865	CARBON BRUSH COVER	2
66	12834	BEARING	1	95	N/A	SWITCH PLASTIC TUBE	1
67	12835	GASKET	1	95-1	N/A	SWITCH TUBE COVER	1
68	12836	FIRST LAYER GEAR BOX	1	96	12861	CARBON BRUSH PROTECTION	1
68-1	12837	BOLT	4	97	N/A	SCREW	4
69	12838	PAWL SHAFT	1	98	N/A	SWITCH COVER	1
70	12839	PAWL ARM	1	98-1	N/A	STICKER	1
71	12840	BOLT	1	99	N/A	FIX PLATE	2
72	12841	PAWL SPRING	1	99-1	N/A	SCREW	2
73	12842	SPRING WASHER	1	100	N/A	INTERNAL SWITCH CONNECTOR	1
74	12843	WASHER	1	101	N/A	SWTICH COVER	1
75	12844	CABLE	1	102	N/A	SCREW	6
76	2359	POWER CONNECTOR SOCKET	1	103	12491	CONTROL WITHOUT CABLE	1
76-1	12845	SCREW	2				



## HOIST PARTS

### DU902 1000kg - DOUBLE FALL PARTS DIAGRAM





## HOIST PARTS

### DU902 1000kg - DOUBLE FALL PARTS LIST

List No.	Part No	Description	QT Y	List No.	Part No	Description	QT Y
1	12769	MOTOR COVER	1	28	12306	CHAIN SET PLATE	2
1.1	12770	SCREW	4	28a	12307	CHAIN BLOCK ASSEMBLY	1
2	12771	BEARING	1	28.1	N/A	SCREW	2
3	12772	FAN OF ROTOR	1	28.2	N/A	WASHER	2
4	12488	ROTOR 110V	1	28.3	N/A	CHAIN STOPPED BLOCK	2
4	12487	ROTOR 240V	1	29	3173	CHAIN BAG SET 15M CHAIN CAPACITY	1
5	12773	AIR GUIDING IRON COVER	1	29	3172	CHAIN BAG SET 35M CHAIN CAPACITY	1
6	12774	FIXING SPRING	1	29.1	N/A	CHAIN BAG	1
7	12775	BEARING	1	29-2	N/A	ROD OF CHAIN BAG	2
8	11146	OIL SEAL	1	29.3	N/A	ROD OF CHAIN BAG	2
8.1	12776	SCREW	2	29.4	N/A	ROD OF CHAIN BAG	2
9	12777	STATOR 110V	1	29.5	N/A	WASHER	1
9	12778	STATOR 240V	1	29.6	N/A	WASHER	4
9.1	12779	SCREW	2	30	11013	LOWER HOOK ASSEMBLY	1
10	12780	MAIN BODY BASE	1	31	N/A	LOWER HOOK SUSPENSION	2
10.1	12781	INSULATED SHEET	1	31.1	N/A	BOLT	6
11	12782	BEARING	1	31-2	N/A	BOLT	6
12	12783	CIRCLIP	1	31.3	N/A	WASHER	1
13	12784	GEAR	1	31.4	N/A	BOLT	
14	12785	CIRCLIP	1	31.5	N/A	WASHER	1
15	12786	FIRST SECTION GEAR SHAFT	1	31.6	N/A	SPACER	3
15.1	12787	KEY	1	32	12877	POWER CABLE ASSEMBLY 110V	1
16	12788	BEARING	1	32	12878	POWER CABLE ASSEMBLY 240V	1
17	12789	OIL SEAL	1	33	N/A	CONTROL CABLE	1
18	12790	GEAR COVR	1	33-1	11714	CONTROL CABLE ASSEMBLY	1
18.1	12791	BOLT	4	33-2	N/A	LANYARD CLIP	1
18.2	12792	BOLT	6	33-3	N/A	BINDER OF CABLE	1
19	12793	LEFT MAIN BODY SHEET	1	34	12801	CHAIN GUIDER	1
20	12794	UPPER HOOK	1	35	12802	ROD OF GEAR SHAFT	2
21	12795	MAIN BODY COVER	1	36	12803	BEARING	1
22	12796	FIX ROD OF MAIN BODY	2	37	12804	BEARING	2
22.1	12880	FIX ROD OFCHAIN SET PLATE	2	38	12805	GEAR	2
23	12797	CIRCLIP	1	39	12806	FIXING BASE OF GEAR SHAFT	1
24	12798	BEARING	1	40	12807	BOLT	4
25	12799	CHAIN SHEAVE	1	41	12808	CIRCLIP	1
26	12800	RIGHT MAIN BODY SHEET	1	42	12809	OIL SEAL	1
27	2190	CHAIN (6.3MM)	1	43	12810	THIRD SECTION GEAR SHAFT	1
27.1	N/A	CHAIN SHEAVE					

Continued...

## HOIST PARTS

### DU902 1000kg - DOUBLE FALL PARTS LIST – Continued

List No.	Part No	Description	QTY	List No.	Part No	Description	QTY
43-1	12811	KEY	1	78	12846	SCREW	3
44	12812	OIL SEAL	1	79	12847	CONTROL PLUG	1
45	12813	BEARING	1	80	12848	FUSE	1
46	12814	CIRCLIP	1	81	12849	CABLE CLIP	1
47	12815	BEARING	1	82	12490	RESISTOR	1
48	12816	BEARING	1	83	12850	FIX PLATE	1
49	12817	RING GEAR	1	83-1	12851	SCREW	2
50	12818	BOLT	4	84	12852	FIX PIN	1
51	12819	BEARING	1	84-1	12853	SCREW	1
52	12820	THIRD SECTION GEAR	1	85	12854	BRIDGE TYPE REGULATOR	2
53	12821	CIRCLIP	1	85-1	12855	SCREW	2
54	12822	BEARING	1	86	12856	SCREW	2
55	12823	THIRD SECTION GEAR SHAFT	1	87	12857	PLASTIC TUBE	1
56	12824	PLATE	1	88	12858	BASE PLATE	1
57	12825	PAWL BRAKE LINING	1	89	12859	ELECTRIC BOX COVER	1
58	12826	BRAKE DEPRESSOR (LOWER)	1	89-1	12860	SCREW	4
59	12827	COPPER SLEEVE	1	90	12861	CARBON BRUSH SET PROTECTION	2
60	12828	PRESS DISK TYPE SPRING	2	91	12862	NUTS	2
61	12829	KEYLESS GEAR	1	91-1	12863	NUTS	2
62	12830	NUTS FIXING SHEET	1	92	12864	CARBON BRUSH HOLDER	2
63	12831	NUTS	1	93	12489	CARBON BRUSH	2
64	12832	TORQUE LIMITED NUTS	1	94	12865	CARBON BRUSH COVER	2
65	12833	BAKE DEPRESSOR (UPPER)	1	95	N/A	SWITCH PLASTIC TUBE	1
66	12834	BEARING	1	95-1	N/A	SWITCH TUBE COVER	1
67	12835	GASKET	1	96	12861	CARBON BRUSH PROTECTION	1
68	12836	FIRST LAYER GEAR BOX	1	97	N/A	SCREW	4
68-1	12837	BOLT	4	98	N/A	SWITCH COVER	1
69	12838	PAWL SHAFT	1	98-1	N/A	STICKER	1
70	12839	PAWL ARM	1	99	N/A	FIX PLATE	2
71	12840	BOLT	1	99-1	N/A	SCREW	2
72	12841	PAWL SPRING	1	100	N/A	INTERNAL SWITCH CONNECTOR	1
73	12842	SPRING WASHER	1	101	N/A	SWITCH COVER	1
74	12843	WASHER	1	102	N/A	SCREW	6
75	12844	CABLE	1	103	12881	BOLT	1
76	2359	POWER CONNECTOR SOCKET	1	104	12882	WASHER	1
76-1	12845	SCREW	2	105	12491	CONTROL ONLY	1
77	2358	SWITCH CONNECTOR SOCKET	1				

## WARRANTY

BHW Group Ltd warrants each new hoist and ancillary equipment supplied against factory defects in material and workmanship for one year from date of purchase.

The responsibility for uninstalling the hoist or ancillary equipment is the owner's, together with its return, transportation prepaid to BHW Group Ltd.

BHW Group Ltd will, under this Warranty, without charge repair or replace at its option, parts, which on inspection are deemed to be defective. The loss of use of the produce, loss of time, inconvenience, commercial loss or consequential damages are not covered.

Warranty does not apply where the product has been tampered with or altered in any way, or where the serial number or date stamp has been defaced, altered or removed, or if in the view of BHW Group Ltd the damage or failure occurred from misuse, negligence or accident.

### THIS WARRANTY EXCLUDES CHAINS

BHW Group Ltd reserve the right to change the design of any product without assuming any obligation to modify any product previously supplied.

Hoists or equipment returned under warranty should be despatched to BHW Group Ltd service department at the address shown below, with full name and address of sender, a statement detailing the defect and proof of purchase.

**BHW**  
**Bushey Hall Winchmaster**  
**www.bhwgroup.com**

Service Department  
BHW Group Ltd  
Unit 6 South Orbital Trading Park  
Hedon Road  
Hull HU9 1NJ

Telephone: +44 (0)1482 223 663  
Fax: +44 (0)1482 218 285  
Email: [sales@bhwgroup.com](mailto:sales@bhwgroup.com)  
Website: [www.bhwgroup.com](http://www.bhwgroup.com)

**DELTA HOIST MODEL & VOLTAGE.....**

**SERIAL NUMBER.....**

**DATE OF PURCHASE.....**