

COMPACT WINCHES 200-300kg

CWL200 / 200L (200kg)

CWL301 / 301L (300kg)

110V or 240V x 1ph AC on most models

These lightweight, fast and efficient single phase winches are the ideal general purpose machines - and cannot be beaten for portable applications.

WINCH STANDARDS & BHW GROUP LTD

The British Standard: BS EN14492-1 for power driven winches, BS EN14492-2 for power driven hoists provides the means for conformity to essential Health and Safety requirements of the EN Machinery Directive and the essential Health & Safety at Work Act 1974.

Conformity to these standards is the joint responsibility of the supplier, the installer and the company operating the product.



BHW Group Ltd products are fully compliant and carry a CE and UKCA mark. A Declaration of Conformity is also supplied with each winch or hoist.

Our aim at BHW Group Ltd is to ensure the correct machine is supplied to suit the application and we welcome the opportunity of discussing the proposed application and offer advice. It will help us considerably if information regarding the maximum and average loads to be lifted or pulled - and approximate frequency of use can be provided.

For hoisting applications, the minimum breaking force (MBF**) of the wire rope must be 5 x the lifting capacity of the hoist. The ratio of wire rope diameter to mean drum diameter* is usually at least 15:1. This will vary according to the application, the average operating time per day and the average and maximum weights being lifted.

For pulling applications, as a general rule, winches used in pulling applications rarely see their maximum rated capacity and are used intermittently for short running periods. In these applications the wire rope MBF** to winch rating can be a minimum 2:1 and the ratio of wire rope to mean drum ratio* as low as 10:1.

In applications where the winch is used for longer running times and more frequently sees higher loading conditions the wire rope to MBF** should be 3:1 and the ratio of wire rope to mean drum ratio* 12:1.

For recovery vehicles the permissible standard of wire rope MBF** to winch rating can be a minimum 2:1 and the ratio of wire rope to mean drum ratio* only 10:1. This minimum standard is permitted because the running time is so short and the winch rarely sees maximum load.

Wire rope capacities the maximum amount of wire rope on the drum must leave a freeboard to the top of the drum flange of 1.5x wire rope diameters to prevent the wire rope coming off the drum.

Winches and hoists with capacities over 1000kg must be load limited.

* Mean drum diameter = the drum diameter plus the diameter of the wire rope.

** MBF = the Minimum Breaking Force of the wire rope.

FEATURES INCLUDE:

- **Available in 110V and 240V, 1phase**
CWL200 & CWL200L = 110V & 240V
CWL301L = 240V only
- **Operates on standard household power supply**
In case of 110V version via transformer
- **Dynamic and mechanical brake**
Provides instant and safe braking
- **Lightweight and compact design**
For easy installation
- **Foot mounted**
Can be installed upside down
- **Enclosed drum flange**
Prevents ropes becoming trapped between drum and support castings
- **Complete with wire rope**
Galvanised for longer life
- **360° weighted safety hook**
Swivel type with safety catch
- **10 metre pendant control**
Plug-in, with 2 buttons and emergency stop
- **3 metre power lead**
Pre-wired to the winch with commercial type plug
- **Motor rating IP44**
Brush type motor - no options

OPTIONAL EXTRAS

- **Pendant control extension**
Plug in for additional 10 metre length
- **Radio remote control**
WK100L plug and play radio remote

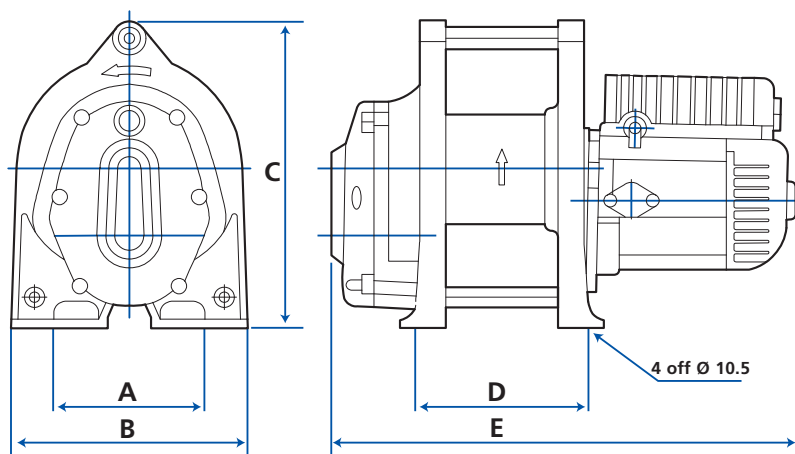
Bushey Hall Winchmaster sales@bhwgroup.com www.bhwgroup.com

Southern Office: Lismirrane Industrial Park, Elstree Road, Elstree, Herts, WD6 3EE Tel: +44 (0)20 8953 6050

Northern Office: 6 South Orbital Trading Park, Hedon Road, Hull, East Yorkshire, HU9 1NJ Tel: +44 (0)1482 223 663

Bushey Hall Winchmaster is a division of BHW Group Limited. Registered in England No. 1342461 VAT No. 301 7915 80





WINCH DIMENSIONS mm						
MODEL	A	B	C	D	E	Fixing holes
CWL200 / 301	135	210	270	152	415	4 off Ø 10.5
CWL200L / 301L	135	210	270	207	470	4 off Ø 10.5

SPECIFICATIONS		CWL200		CWL200L		CWL301	CWL301L
Voltage options		110V	240V	110V	240V	240V only	240V only
Lifting:	Capacity	200kg		200kg		300kg	300kg
	Height	45m		69m		29m	53m
Weight:	Hoist only	30kg		33kg		38kg	40kg
	Total kit (average)	32kg		35kg		40kg	42kg
Line speed:	1st layer	11m/min		11m/min		16m/min	16m/min
	Last layer	16m/min		16m/min		25m/min	25m/min
Duty cycle:		All CWL hoists have a duty cycle of 25%, with a maximum of 60 starts per hour					
Wire rope:	Diameter Ø	5mm		5mm		6mm	6mm
	Length	46m		71m		30m	55m
	Rope construction	6 x 19 wire core, galvanised for longer rope life. Factor of safety = 5:1 (for lifting)					
Motor type:		Induction motor					
Motor outputs:	Kilowatts	1.2kW		1.2kW		2.3kW	2.3kW
	Amperes	12A	6A	12A	6A	11A	11A
Braking:		Motor: Electronic via resistor Gears: Mechanical ratchet brake					
Drum:	Length	97mm		147mm		97mm	147mm
	Diameter Ø	95mm		95mm		95mm	95mm
	Flange Diameter Ø	190mm		190mm		190mm	190mm
Rope ø to mean drum ø ratio:		20:1		20:1		17:1	

* Mean drum diameter = the drum diameter plus the diameter of the wire rope.

NOTES

These winches must not be used for the movement of personnel and 7 wraps of wire rope must be maintained on the drum.

Data shown is approximate and intended as a guide only.

WARRANTY

Each new winch is guaranteed against defects in workmanship and material defects for a period of twelve months from date of purchase.

Wire ropes are not included under warranty.

Bushey Hall Winchmaster sales@bhwgroup.com www.bhwgroup.com

Southern Office: Lismirrane Industrial Park, Elstree Road, Elstree, Herts, WD6 3EE Tel: +44 (0)20 8953 6050

Northern Office: 6 South Orbital Trading Park, Hedon Road, Hull, East Yorkshire, HU9 1NJ Tel: +44 (0)1482 223 663

Bushey Hall Winchmaster is a division of BHW Group Limited. Registered in England No. 1342461 VAT No. 301 7915 80

