

BH DELTA 3200 KIT COMPRISES

Electric Winch, 4.5m heavy duty 2 button wanderlead, mounting plate, roller guides and 8mm x 23m galvanised 2160N/mm² grade 6x36 core wire rope with safety latch hook.

Total kit weight 40kg.



Can also be supplied with:
Emergency Stop, Safety Solenoid
and In-Cab Switch (not shown)

ADDITIONAL EQUIPMENT & SERVICES

- BHW WINCH CONTROL SYSTEM (see opposite)
- Electric isolator switch
- Auxiliary industrial 16 amp plug and socket kit for wanderlead connection
- Fuse and fuse holder
- Snatch block
- Radio Control Unit
- Full or partial fitting can be provided, including load testing and certification

BH DELTA 3200

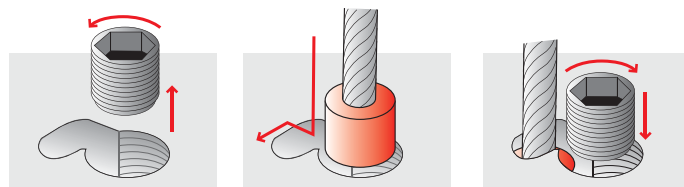
12v or 24v DC Electric Recovery Winch
3200kg Line Pull

Light Duty Car Transporters, Plant Moving
Vehicles with GVW up to 3500kg, Spec-Lifts, 4x4's

This low profile planetary winch has been developed for light industrial use. It incorporates a large electric motor, ensuring good service life.

FEATURES INCLUDE

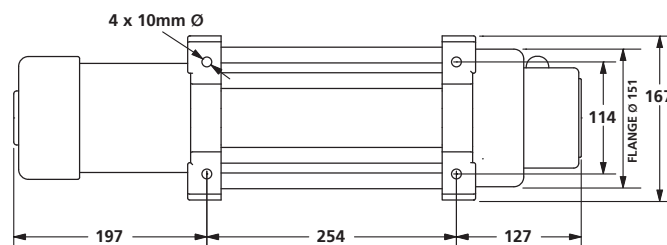
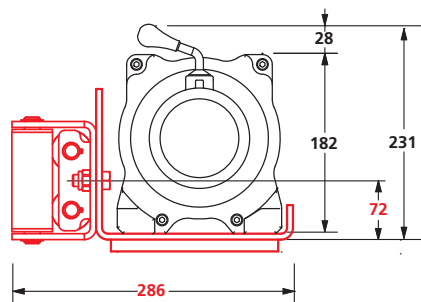
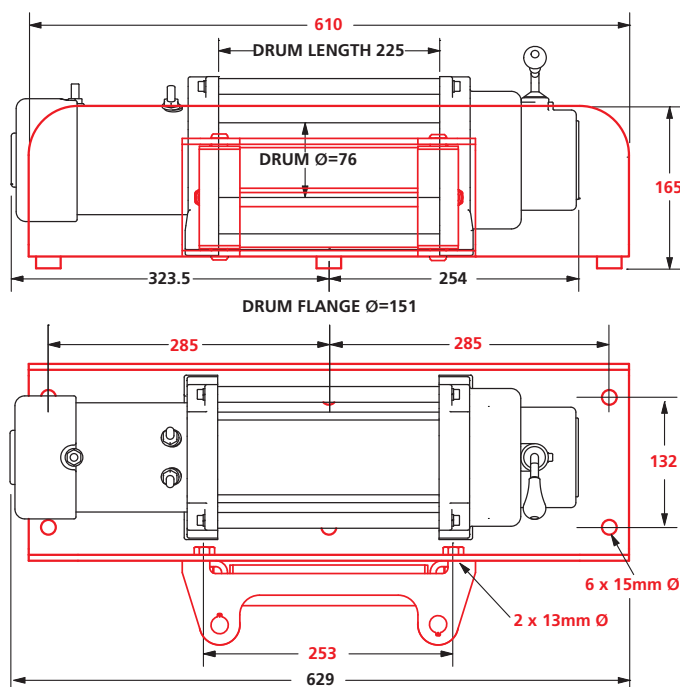
- **3200kg line pull**
(31.4kN)
- **EN14492-1 compliant**
- **Powerful series wound, high torque motor options**
12v or 24v
- **Optional electronic load limiting device**
Pre wired to solenoid for safer winch operation
- **3 stage planetary gearing**
Providing high mechanical efficiency
- **Automatic braking action in drum**
- **Freespool clutch lever**
Easy to operate lever for disengaging drum
- **Power in / power out**
Fine control ensures load will not overrun
- **4 way roller guides and mounting plate**
- **Heavy duty 4.5m wanderlead control**
Two button supplied a standard, alternative lengths and additional emergency stop button available on request
- **Wire rope positively secured to drum**
Using fixed plug and grub screw engagement



UPGRADE TO A BHW WINCH CONTROL SYSTEM

Save time and money on installation - Ready to fit.

A choice of three alternative winch control kits designed to provide all in one emergency stop, isolator switch, safety solenoid and power outlets.



		LAYER		
		1	2	3
Maximum Rated Line Pull by Layer*	kgf	3200	2646	2254
	kN	31.38	25.95	22.10
Cable Drum Capacity Cumulative by Layer (8mm dia. cable)	m	7	15	23

*By incorporating a snatch block in the line it is possible to double these capacities.

PERFORMANCE FIRST LAYER OF CABLE				
LINE PULL kgf	LINE SPEED (approx)		AMP DRAW (approx)	
	12v m/min	24v m/min	12v	24v
0	8	8	66	32
500	6	7	120	60
1000	4.5	5	170	85
1500	4	4.2	204	102
2000	3.2	3.5	240	120
2500	2.6	2.8	280	140

All figures are based on battery maintaining normal voltage.

SPECIFICATIONS

Rated Line Pull (single line): Maximum recommended working capacity 3,200kgf to comply with EN14492-1. Stall capacity 4300kg.

Gear Ratio: 216:1 for either 12v or 24v.

Motor: High torque series wound 12v (6hp) or 24v (4.7hp).

Switching: Heavy duty, double acting solenoids can be mounted adjacent to winch or on to the winch tie bars with straps provided.

Load Limiting Device Optional, pre-wired and fitted to underside of solenoid pack. Can be calibrated to shut down winch when maximum load limit is reached.

Wanderlead Control: Commercial heavy duty type with 2 operating buttons and 4.5m cable. Other lengths and additional emergency stop button versions available on request.

Roller Guides: Heavy duty, 4 way commercial type with greaseways.

Wire Rope: 8mm diameter galvanised 2160N/mm² grade, 6 x 36 wire core construction with 65.6kN minimum breaking strain.

Freespooling: Lever on gear housing to disengage clutch.

Complete Kit Weight: 40kg.

NOTES

These winches must not be used for the movement of personnel and 5 wraps of wire rope must be maintained on the drum.

Data shown is approximate and intended as a guide only.

WARRANTY

Each new winch is guaranteed against defects in workmanship and material defects for a period of twelve months from date of purchase.

Wire ropes are not included under warranty.

Bushey Hall Winchmaster sales@bhwwgroup.com www.bhwwgroup.com

Southern Office: Lismirrane Industrial Park, Elstree Road, Elstree, Herts, WD6 3EE Tel: +44 (0)20 8953 6050

Northern Office: 6 South Orbital Trading Park, Hedon Road, Hull, East Yorkshire, HU9 1NJ Tel: +44 (0)1482 223 663

Bushey Hall Winchmaster is a division of BHW Group Limited. Registered in England No. 1342461 VAT No. 301 7915 80

